

# Appendix L

Archaeology, Architectural and Cultural Heritage



# Appendix L1

Policies relating to Archaeology, Architectural  
Heritage and Cultural Heritage Summary

Meath County Development Plan 2013-2019  
and  
Kildare County Development Plan (2011–2017)



ENVIRONMENTAL BALANCE IN DESIGN AND CONSTRUCTION

# 1. MEATH COUNTY DEVELOPMENT PLAN 2013-2019, STRATEGY FOR ARCHAEOLOGICAL ARCHITECTURAL AND CULTURAL HERITAGE

## 1.1. Archaeological Heritage Policies and Objectives

### Relevant policies regarding archaeological heritage

- CH POL 6 To promote awareness of, and access to, the archaeological inheritance of County Meath.
- CH POL 7 To ensure that development in the immediate vicinity of a recorded monument is sensitively sited and designed so that it does not significantly detract from the monument. Where upstanding remains exist, a visual impact assessment may be required.
- CH POL 8 To retain surviving medieval plots and street patterns in the villages and towns of Meath, where practicable, and in the course of development to record evidence of ancient boundaries, layouts, etc.
- CH POL 9 To inform and seek guidance from the National Museum of Ireland if an unrecorded archaeological object is discovered, or the National Monuments Service of the DoAHG in the case of the discovery of an unrecorded archaeological site, in accordance with National Monuments legislation

### *Development in the UNESCO World Heritage Site of Brú na Bóinne*

- CH POL 1 To work in partnership with the relevant agencies/organisations and the public to promote, understand, conserve and sustainably manage the UNESCO World Heritage Site of Brú na Bóinne.
- CH POL 3 To require that all development within the UNESCO World Heritage Site of Brú na Bóinne shall be subject to the Development Assessment Criteria set out in Volume 1, Chapter 9, Section 9.6.7, and elsewhere in the Development Plan.
- CH POL 4 To refer all planning applications within the UNESCO World Heritage Site of Brú na Bóinne to the Department of Arts, Heritage and the Gaeltacht for comment. These comments will be considered in the making of decisions on all such planning applications.

### *World Heritage Tentative List*

Two sites in Meath have been included on the Tentative List as part of larger assemblies of sites:

- The Royal Sites of Ireland (Cashel, Dún Ailinne, Hill of Uisneach, Rathcroghan Complex and Tara Complex);
- Early Medieval Monastic Sites (Clonmacnoise, Durrow, Glendalough, Inis Cealtra, Kells and Monasterboice).

CH POL 5 To recognise and respect potential World Heritage Sites in Meath on the UNESCO Tentative List – Ireland-2010 and support their nomination to World Heritage status.

### *Industrial Heritage*

Industrial heritage consists primarily of sites and structures associated with transportation, communications, manufacturing, public utilities, and materials extraction, but can also refer to archaeological sites and objects which demonstrate early evidence of industry such as metal working, or mining. Meath contains significant stretches of both operational and derelict waterways, railway structures, mills, lime kilns and milestones. Meath County Council commissioned an Industrial Heritage survey of the County in 2008 which may be seen on its website.

### Relevant objectives regarding archaeological heritage

- CH OBJ 7 To protect archaeological sites and monuments, underwater archaeology, and archaeological objects, which are listed in the Record of Monuments and Places, and to seek their preservation in situ (or at a minimum, preservation by record) through the planning process.

- CH OBJ 8 To seek to protect important archaeological landscapes from inappropriate development.
- CH OBJ 11 To encourage and promote the appropriate management and maintenance of the County's archaeological heritage, including historical burial grounds, in accordance with conservation principles and best practice guidelines.

#### *Development in the UNESCO World Heritage Site of Brú na Bóinne*

- CH OBJ 1 To protect and enhance the Outstanding Universal Value of the cultural landscape in the UNESCO World Heritage Site of Brú na Bóinne in accordance with the relevant guidelines and national legislation, so that its integrity, authenticity and significance are not adversely affected by cumulative inappropriate change and development, and to enhance views within and adjacent to the site.
- CH OBJ 2 To protect the ridgelines which frame views within and from the UNESCO World Heritage Site of Brú na Bóinne from inappropriate or visually intrusive development.
- CH OBJ 3 To encourage and facilitate pre-planning consultation with applicants regarding the siting and design of developments affecting the UNESCO World Heritage Site of Brú na Bóinne, and the scope of any necessary impact assessments.

## **2.1. Strategy for Archaeological Heritage**

### Aims (County Development Plan Section 2.5)

- To ensure that the unique cultural heritage of Meath is protected, conserved, enhanced and sensitively integrated into the sustainable development of the county for the benefit of present and future generations.
- To ensure that features of Meath's natural heritage and green infrastructure that provide ecosystem services are protected and that tourist and recreational uses are facilitated in a sustainable manner.
- To protect the landscape character, quality and local distinctiveness of County Meath.

### Strategies

[*Cultural Heritage: CDP Section 9.6*]

It is the strategic policy of Meath County Council:

- CSA SP 1 To ensure that the unique cultural heritage of Meath is protected, conserved and sensitively integrated into the sustainable development of the county for the benefit of present and future generations.
- CSA SP 3 To promote the understanding of County Meath's landscape in terms of its inherent and unique character and to recognise what elements should be preserved, conserved or enhanced.

### Legislation, policies and guidelines referenced in the plan

- Industrial Heritage survey of County Meath (2008)
- Planning and Development Acts 2000-2012
- EU Directives, UNESCO Operational Guidelines, and International Charters, in particular – Convention Concerning the Protection of the World Cultural and Natural Heritage (The World Heritage Convention 1972), and the European Landscape Convention 2000
- National Monuments Acts 1930 – 2004
- The Planning and Development Acts 2000-2012 and Regulations
- National and Regional Planning guidelines
- Architectural Heritage Protection – Guidelines for Planning Authorities 2011
- ICOMOS charters and guidelines, in particular - Guidance on Heritage Impact Assessments for Cultural World Heritage Properties. 2011.

- A National Landscape Strategy for Ireland Strategy Issues Paper for Consultation (DoAHG, 2011)
- Wind Energy Development Guidelines (DoEHLG, 2006)

## 1.2. Architectural Heritage Policies and Objectives

- CH POL 10 To conserve and protect the architectural heritage of Meath.

### Relevant policies regarding protected structures

- CH POL 12 To encourage the retention, sympathetic reuse and rehabilitation of Protected Structures. In certain cases, land use zoning restrictions may be relaxed in order to secure the conservation of the protected structure.
- CH POL 13 To encourage the retention of original windows, doors, renders, roof coverings and other significant features of historic buildings.
- CH POL 14 To continue to develop the Council's advisory/educational role with regard to heritage matters and to promote awareness, understanding, and appreciation of the architectural heritage of Meath.
- CH POL 15 To encourage, where appropriate, the adaptive re-use of existing buildings and sites in a manner compatible with their character and significance.

### Relevant policies regarding Industrial Heritage

Industrial heritage consists primarily of sites and structures associated with transportation, communications, manufacturing, public utilities, and materials extraction, but can also refer to archaeological sites and objects which demonstrate early evidence of industry such as metal-working, or mining. Meath contains significant stretches of both operational and derelict waterways, railway structures, mills, lime kilns and milestones.

- CH OBJ 17 To work with stakeholders to progress the phased restoration, maintenance and re-use for amenity purposes of the Boyne Navigation, towpath and associated structures within Meath.
- CH OBJ 18 To work with stakeholders to promote the maintenance and re-use for amenity purposes of the Royal Canal and associated structures within Meath.
- CH OBJ 19 To carry out phase two of the Industrial Heritage Survey, which will comprise a more detailed site inventory and assessment of surviving structures and sites.

### Relevant policies regarding vernacular structures

CH POL 20

- To encourage the retention, sympathetic maintenance, and appropriate re-use of the vernacular heritage of Meath, in both the towns and rural areas of the County, including the retention of the original fabric, such as windows, renders, shop fronts, gates, yards, boundary walls and other significant features where possible;
- To discourage the replacement of good quality vernacular buildings with modern structures;
- To ensure that new build adjoining, and extensions to, vernacular buildings are of an appropriate design and do not detract from the building's character.

### Relevant policies regarding Architectural Conservation Areas (ACAs)

The Town Plans of Navan, Trim and Kells contain details of the ACAs in these towns. For the area of the County Plan the following 18 ACAs are designated: Ardbraccan Demesne, Athboy, Dunboyne, Dunsany Castle Demesne, Headfort Demesne, Julianstown, Kilmessan, Laytown, Longwood, Moynalty, Oldbridge Demesne, Oldcastle, Slane, Slane Castle Demesne, Slane Mill Complex, Somerville Demesne, Stackallen Demesne, Summerhill.

- CH POL 17 To identify places of special architectural, historical, archaeological, artistic, cultural, scientific, social or technical interest and where appropriate to define them as Architectural Conservation Areas.

- CH POL 18 To require that all development proposals within an ACA should be appropriate to the character of the area, inclusive of its general scale and materials, and are appropriately sited and sensitively designed having regard to the advice given in the Statements of Character for each area.

#### Relevant policies regarding Country Houses and Demesnes

CH POL19 To encourage the protection, promotion and enhancement of heritage gardens and parks in the county and support public awareness, enjoyment of and access to these sites.

#### Relevant objectives regarding Architectural Heritage

- CH OBJ 13 To protect all structures (or, where appropriate, parts of structures) within the county which are of special architectural, historical, archaeological, artistic, cultural, scientific, social or technical interest and which are included in the RPS.
- CH OBJ 14 To review and update the RPS when new information becomes available and to make additions and deletions as appropriate.
- CH OBJ 15 To identify and retain good examples of historic street furniture e.g. cast-iron post boxes, water pumps, signage, street lighting and kerbing.
- CH OBJ 20 To prohibit the demolition of a structure that positively contributes to the character of an ACA, except in exceptional circumstances. Meath County Council will require such applications to be accompanied by a measured and photographic survey, condition report and architectural heritage assessment of the structure. Where permission for demolition is granted within an ACA, an assessment of the impact of the replacement building on the character of the ACA will be required.
- CH OBJ 21 To ensure that any new development within or contiguous to an ACA is sympathetic to the character of the area and that the design is appropriate in terms of scale, height, plot density, layout, materials and finishes.
- CH OBJ 22 To discourage development that would lead to a loss of, or cause damage to, the character, the principal components of, or the setting of historic parks, gardens and demesnes of heritage significance.
- CH OBJ 23 To require that proposals for development in designed landscapes and demesnes include an appraisal of the landscape, designed views and vistas, and an assessment of significant trees or groups of trees, as appropriate.
- CH OBJ 24 To assist the retention and development of traditional building skills in Meath subject to the availability of resources.

## 2. KILDARE COUNTY DEVELOPMENT PLAN 2011-2017

### 2.1. Strategy for Architectural and Archaeological Heritage

#### Aim

To protect, conserve and manage the archaeological and architectural heritage of the county and to encourage sensitive sustainable development so as to ensure its survival and maintenance for future generations.

#### Strategies

- Protect and conserve buildings, structures and sites of special architectural, historic, archaeological, artistic, cultural, scientific, social or technical interest.
- Protect and conserve the archaeological heritage of the county. Secure the preservation in-situ or by record of all sites and features of historical and archaeological interest.
- Protect and conserve areas that have particular environmental qualities that derive from their overall layout, design and character.
- Protect and conserve historic milestones, street furniture, and other significant features of interest wherever feasible.
- Encourage the rehabilitation, renovation and re-use of existing older buildings where appropriate.

#### Legislation, policies and guidelines referenced in the plan

- Convention for the Protection of the Architectural Heritage of Europe (The Granada Convention; ratified by Ireland in 1997)
- Planning and Development Act, 2000.
- Architectural Heritage Protection, Guidelines for Planning Authorities (Department of the Environment, Heritage and Local Government, 2004)
- A Government Policy on Architecture 2009–2015.
- A garden and demesne survey of historic designed landscapes is also being prepared by the Department of the Environment, Heritage and Local Government (NIAH Garden Surveys).
- The European Convention on the Protection of the Archaeological Heritage (Valetta, 1992; ratified by Ireland in 1997).
- National Monuments Acts 1930–2004. Section 12 of the National Monuments (Amendments) Act 1994.
- The Framework and Principles for the Protection of the Archaeological Heritage (Department of Heritage, Gaeltacht and the Islands, 1999).
- National Heritage Plan (2002)
- County Kildare Heritage Plan 2005-2011
- Wind Energy Development Guidelines (DoEHLG, 2006)

### 2.2. Architectural Heritage Policies and Objectives

#### Relevant policies regarding protected structures

- PS 1: To conserve and protect buildings, structures and sites contained on the Record of Protected Structures (RPS) of special architectural, historic, archaeological, artistic, cultural, scientific, social or technical interest.

- PS 2: To protect the curtilage of protected structures or proposed protected structures and to refuse planning permission for inappropriate development within the curtilage or attendant grounds of a protected structure which would adversely impact on the special character of the protected structure including loss of or damage to the special character of the protected structure and loss of or damage to, any structures of architectural heritage value merit within the curtilage of the protected structure. Any proposed development within the curtilage and/or attendant grounds must demonstrate that it is part of an overall strategy for the future conservation of the entire built heritage complex and contributes positively to that aim.
- PS 3: To require that new works will not obscure views of principal elevations of protected structures.
- PS 16: To protect and retain important elements of the built heritage including historic gardens, stone walls, landscapes and demesnes, and curtilage features.

#### Relevant policies regarding vernacular structures

- VA 1: To encourage the protection, retention, appreciation and appropriate revitalisation of the vernacular heritage of the county.
- VA 2: To resist the demolition of vernacular architecture, in particular thatched cottages and farmhouses and to encourage their sensitive reuse having regard to the intrinsic character of the structure.
- VA 4: To preserve the character and setting (e.g. gates and gate piers, courtyards etc.) of vernacular buildings where deemed appropriate by the planning authority.
- VA 5: To protect (through the use of ACAs, the RPS and in the normal course of development management) vernacular buildings where they contribute to the character of areas and/or where they are rare examples of a structure type.

#### Relevant policies regarding Architectural Conservation Areas (ACAs)

- ACA 1: To investigate the designation of further ACAs at appropriate locations throughout the county to include Celbridge, Kildare Town, Johnstown, Ballymore Eustace, Kilcullen, Brannockstown, Rathmore, Clane and Newbridge.
- ACA 2: To ensure that any development, modifications, alterations, or extensions within an ACA are sited and designed appropriately, and are not detrimental to the character of the structure or to its setting or the general character of the ACA.

#### Relevant policies regarding Country Houses and Demesnes

- CH 1: To promote appreciation of the landscape and historical importance of traditional and historic gardens, demesnes and parks within Kildare in general and particularly where they constitute an important setting to a protected structure.
- CH 2: To have regard to the historic gardens and designed landscape sites in County Kildare identified in the National Inventory of Architectural Heritage (NIAH).
- CH 3: To encourage conservation, renewal and improvement which enhances the character and the setting of parks, gardens, and demesnes of historic interest within the county.
- CH 4: To cooperate with owners in the protection, promotion and enhancement of heritage gardens and parks in the County, to support public awareness, enjoyment of and access to these sites and to seek the cooperation and assistance of other interested parties, including Government Departments and state agencies, in this regard.
- CH 5: To designate ACAs where considered appropriate, to preserve the character of a designed landscape.



### Relevant objectives regarding Architectural Heritage

- AAO 7: To prepare a character appraisal and area specific policy for each ACA to preserve, protect and enhance the character of these areas.
- AAO 9: To assess the demesnes within Kildare and promote the conservation of their essential character, both built and natural, while allowing for appropriate re-use.
- AAO 10: To identify and retain good examples of historic street furniture in situ e.g. cast-iron postboxes, water pumps, signage, street lighting, kerbing and traditional road and street surface coverings.
- AAO 12: To co-operate with Waterways Ireland in the management, maintenance and enhancement of the Royal Canal and Grand Canal and associated structures/features.
- AAO 13: To carry out an audit of all historic rail and road bridges and disused railway lines in Kildare and liaise with Iarnród Éireann and the National Roads Authority regarding same.
- AAO 15: To ensure that in the event of a planning application being granted for development within the curtilage of a protected structure, the proposed works to the protected structure should occur in the first phase of the development to prevent endangerment, abandonment and dereliction of the structure.
- AAO 16: To require that planning applications take into consideration the impacts of the development on their landscapes and demonstrate that the development proposal has been designed to take account of the heritage resource of the landscape.

## **2.3. Archaeological Heritage Policies and Objectives**

### Relevant policies regarding archaeological heritage

- AH 1: To have regard to the Record of Monuments and Places (RMP) and the Urban Archaeological Survey when assessing planning applications for development. No development shall be permitted in the vicinity of a recorded feature where it detracts from the setting of the feature or which is injurious to its cultural or educational value.
- AH 2: To seek to protect and preserve archaeological sites which have been identified subsequent to the publication of the RMP.
- AH 3: To ensure that development in the vicinity of a site of archaeological interest is not detrimental to the character of the archaeological site or its setting by reason of its location, scale, bulk or detailing and to ensure that such proposed developments are subject to an archaeological assessment. Such an assessment will seek to ensure that the development can be designed in such a way as to avoid or minimise any potential effects on the archaeological heritage.
- AH 4: To protect historic burial grounds within the county and encourage their maintenance in accordance with conservation principles in co-operation with the Historic Monuments Advisory Committee and National Monuments Section of the Department of the Arts, Heritage and the Gaeltacht (DoAHG).
- AH 5: To ensure that disturbance, removal and alteration of the line of town defences are suitably safeguarded within the historic towns and settlements of County Kildare.
- AH 6: To retain where possible the existing street layout, historic building lines and traditional plot widths where these derive from medieval or earlier origins.
- AH 7: To promote and support in partnership with National Monuments Section of the DoAHG, the concept of Archaeological Landscapes where areas contain several Recorded Monuments.
- AH 8: To encourage, where practicable, the provision of public access to sites identified in the RMP under the direct ownership, guardianship or control of the Council and/or the State.
- AH 9: To encourage the provision of signage to publicly accessible recorded monuments.

### Relevant objectives regarding archaeological heritage

- AAO 14: To safeguard sites, features and objects of archaeological interest generally and to secure the preservation (in-situ or by record) of all archaeological monuments included in the Record of Monuments and Places as established under Section 12 of the National Monuments (Amendment) Act 1994, and their settings.
- AAO 16: To require that planning applications take into consideration the impacts of the development on their landscapes and demonstrate that the development proposal has been designed to take account of the heritage resource of the landscape.
- AAO 17: To carry out field surveys of Industrial Archaeological types in the County and make recommendations for their protection.

## Protected Views

### Protected Views referencing recorded archaeological monuments or protected structures

- SR 5 Views of Moat and Ardscull, N78 from Russelstown Cross Roads to Kilmead, at Tullygorey, Aghanure, Ardscull, Youngstown.
- SR 6 Views of Robertstown Countryside and Views across the Canal at Mylerstown, Lowtown, Littletown, Derrymullen, Robertstown East.
- SR 19 Views of Canal, River Slate and Surrounding Countryside from R414 at Rathangan, at Bonaghmore, Kilmoney North, Mullantine, Mount Prospect, Newtown.
- SR 28 Views from county roads (L5017 & L26) of Carbury Castle and Hill: Teelough road junction with the R402 and upland area at Mylerstown, Calfstown, Knockcor, Carbury, Coolcor.
- SR 38 Views of Allenwood to Lullymore Local Road.
- SR 39 Views of Lullymore to Rathangan Local Road.
- Views of the River Barrow from Bridges, Adjacent Lands and Roads
- RB 4 Bert Bridge, Tyrellstown
- RB 5 Dunrally Bridge, Lowtown
- RB 6 Pass Bridge, Passlands
- Views to and from all Bridges on the Grand Canal are protected.

## 2.4. Landscape Character Assessment

### Landscape Character Areas

The Landscape Character Assessment of Co. Kildare (2004) focuses on characterisation i.e. the discernment of the character of the landscape based on its land cover and landform but also on its values such as historical, cultural, religious and other understandings of the landscape. Based on the findings of the Landscape Character Assessment a landscape sensitivity rating was developed for each of the Landscape Character Areas. Landscape sensitivity is a measure of the ability of the landscape to accommodate change or intervention without suffering unacceptable effects to its character and values, with ratings of low, medium or high sensitivity (L, M, H below).

### *Major Landscape Type*

- Uplands (Eastern Uplands – Oughterard (H), South-eastern Uplands – Corballis Hills (H), Northern Hills – Newtown Hills (H), Chair of Kildare – Red Hill, Dunmurry Hill, Allen Hill (H))
- *Lowland Plains and Boglands* (Northern Lowlands– Naas and environs (L), Southern Lowlands (L), North-western Lowlands–Cadamstown and environs (L), Central Undulating Lowlands (M), Western Boglands (M))
- *Transition Lands* (Eastern Transition Lands) (M) Transitional areas contain some elements of both the upland and lowland areas.

- *River Valleys and Water Corridors* (River Liffey Valley, River Barrow Valley, Grand Canal Corridor, Royal Canal Corridor) (H)

#### *Areas of High Amenity*

In addition to landscape character areas and the sensitivity of these areas to development there are certain special landscape areas within the county, some of which overlap with sensitive landscapes. For the purposes of the CDP these areas have been defined as Areas of High Amenity. They are classified because of their outstanding natural beauty and/or unique interest value and are generally sensitive to the impacts of development:

- River valleys
- The Grand and royal Canal Corridors

#### Relevant Landscape Policies

##### *General Landscape*

- LA 1: To ensure that consideration of landscape sensitivity is an important factor in determining development uses. In areas of high landscape sensitivity, the design, type and the choice of location of proposed development in the landscape will also be critical considerations.
- LA 2: To protect and enhance the county's landscape, by ensuring that development retains, protects and, where necessary, enhances the appearance and character of the existing local landscape.
- LA 4: To seek to ensure that local landscape features, including historic features and buildings, hedgerows, shelter belts and stone walls are retained, protected and enhanced where appropriate, so as to preserve the local landscape and character of an area, whilst providing for future development.

##### *Lowland plains and Boglands Character Area*

LL 5: To recognise that cutaway and cut-over boglands represent degraded landscapes and/or brownfield sites and thus are potentially robust to absorb a variety of appropriate developments.

##### *Upland Character areas included. East Kildare Uplands (area of high amenity)*

- LU 1: To ensure that development will not have a disproportionate visual impact (due to excessive bulk, scale or inappropriate siting) and will not significantly interfere or detract from scenic upland vistas, when viewed from areas nearby, scenic routes, viewpoints and settlements.
- LU 2: To ensure that developments on steep slopes (i.e. >10%) will not be conspicuous or have a disproportionate visual impact on the surrounding environment as seen from relevant scenic routes, viewpoints and settlements.
- LU 3: To facilitate, where appropriate, developments that have a functional and locational requirement to be situated on steep or elevated sites (e.g. reservoir, telecommunication masts or wind energy structures) where residual adverse visual impacts are minimised or mitigated.

##### *Water Corridors (rivers and Canals) (areas of high amenity)*

- WC 1: To seek to locate new development in the water corridor landscape character areas towards existing structures and mature vegetation.
- WC 3: To control development that will adversely affect the visual integrity of distinctive linear sections of water corridors and river valleys and open floodplains.

### *Scenic Routes and Protected Views*

- SR 1: To protect views from designated scenic routes by avoiding any development that could disrupt the vistas or disproportionately impact on the landscape character of the area thereby affecting the scenic and amenity value of the views.
- WV 1: To curtail any further development along the canal and river banks that could cumulatively affect the quality of a designated view.
- WV 2: To preserve and enhance the scenic amenity of the river valleys and canal corridors and the quality of the vistas available from designated views.
- WV 4: To prevent inappropriate development along canal and river banks and to preserve these areas in the interests of biodiversity, built and natural heritage and amenity by creating or maintaining buffer zones, where development should be avoided.

### Relevant Landscape Objectives

- LO 1: To have regard to the Landscape Sensitivity Classification of sites in the consideration of any significant development proposals.
- LO 2: To ensure landscape assessment will be an important factor in all land-use proposals.
- LO 4: To protect the visual and scenic amenities of County Kildare's built and natural environment.
- LO 5: To preserve the character of all important views and prospects, particularly upland, river, canal views, views across the Curragh, views of historical or cultural significance (including buildings and townscapes) and views of natural beauty.
- LO 6: To preserve and protect the character of those views and prospects obtainable from scenic routes identified in this Plan, listed in Table 14.2 and identified on Map 14.3.
- LO 7: To encourage appropriate landscaping and screen planting of developments along scenic routes. Where scenic routes run through settlements, street trees and ornamental landscaping may also be required.

## **2.5. Wind Energy Policies / Objectives Specific To Cultural Heritage**

It is the policy of the Council:

WE 1: To have regard to the Department of the Environment, Heritage and Local Government Guidelines for Planning Authorities on Wind Energy Development (2006) in assessing all planning applications for wind farms.

WE 2: To encourage the development of wind energy in suitable locations in an environmentally sustainable manner and in accordance with Government policy.

WE 3: To ensure that the assessment of wind energy development proposals will have regard to:

- the sensitivity of the landscape;
- the visual impact on protected views, prospects, scenic routes, as well as local visual impacts;
- the impacts on nature conservation designations, archaeological areas and historic structures, public rights of way and walking routes;
- the visual and environmental impacts of associated development such as access roads, plant and grid connections;
- the scale, size and layout of the project, any cumulative effects due to other projects.

# Appendix L2

Relevant Legislation:  
Summary of  
National Monuments Legislation 1930-2004  
Architectural Heritage (National Inventory) Historic  
Monuments (Miscellaneous Provisions) Act, 1999  
And  
Archaeological, Architectural and Cultural Heritage  
Designations



ENVIRONMENTAL BALANCE IN DESIGN AND CONSTRUCTION

## National Monuments Legislation 1930-2004

All archaeological sites have the full protection of the national monuments legislation (Principal Act 1930; Amendments 1954, 1987, 1994 and 2004).

In the 1987 Amendment of Section 2 of the Principal Act (1930), the definition of a national monument is specified as:

- any artificial or partly artificial building, structure or erection or group of such buildings, structures or erections,
- any artificial cave, stone or natural product, whether forming part of the ground, that has been artificially carved, sculptured or worked upon or which (where it does not form part of the place where it is) appears to have been purposely put or arranged in position,
- any, or any part of any, prehistoric or ancient

(i) tomb, grave or burial deposit, or

(ii) ritual, industrial or habitation site,

and

any place comprising the remains or traces of any such building, structure or erection, any cave, stone or natural product or any such tomb, grave, burial deposit or ritual, industrial or habitation site...

Under Section 14 of the Principal Act (1930):

It shall be unlawful...

- to demolish or remove wholly or in part or to disfigure, deface, alter, or in any manner injure or interfere with any such national monument without or otherwise than in accordance with the consent hereinafter mentioned (a licence issued by the Office of Public Works National Monuments Branch),

or

- to excavate, dig, plough or otherwise disturb the ground within, around, or in the proximity to any such national monument without or otherwise than in accordance...

Under Amendment to Section 23 of the Principal Act (1930), a person who finds an archaeological object shall, within four days after the finding, make a report of it to a member of the Garda Síochána...or the Director of the National Museum...

The latter is of relevance to any finds made during a watching brief.

In the 1994 Amendment of Section 12 of the Principal Act (1930), all of the sites and 'places' recorded by the Sites and Monuments Record of the Office of Public Works are provided with a new status in law. This new status provides a level of protection to the listed sites that is equivalent to that accorded to 'registered' sites [Section 8(1), National Monuments Amendment Act 1954] as follows:

- The Commissioners shall establish and maintain a record of monuments and places where they believe there are monuments and the record shall be comprised of a list of monuments and such places and a map or maps showing each monument and such place in respect of each county in the State.
- The Commissioners shall cause to be exhibited in a prescribed manner in each county the list and map or maps of the county drawn up and publish in a prescribed manner information about when and where the lists and maps may be consulted.

In addition, when the owner or occupier (not being the Commissioners) of a monument or place which has been recorded, or any person proposes to carry out, or to cause or permit the carrying out of, any work at or in relation to such monument or place, he shall give notice in writing of his proposal to carry out the work to the Commissioners and shall not, except in the case of urgent necessity and with the consent of the Commissioners, commence the work for a period of two months after having given the notice.

#### **The National Monuments Amendment Act 2004**

The National Monuments Amendment Act enacted in 2004 provides clarification in relation to the division of responsibilities between the Minister of Environment, Heritage and Local Government, Finance and Arts, Sports and Tourism together with the Commissioners of Public Works. The Minister of Environment, Heritage and Local Government will issue directions relating to archaeological works and will be advised by the National Monuments Section and the National Museum of Ireland. The Act gives discretion to the Minister of Environment, Heritage and Local Government to grant consent or issue directions in relation to road developments (Section 49 and 51) approved by An Bord Pleanála and/or in relation to the discovery of National Monuments

14A. (1) The consent of the Minister under section 14 of this Act and any further consent or licence under any other provision of the National Monuments Acts 1930 to 2004 shall not be required where the works involved are connected with an approved road development.

(2) Any works of an archaeological nature that are carried out in respect of an approved road development shall be carried out in accordance with the directions of the Minister, which directions shall be issued following consultation by the minister with the Director of the National Museum of Ireland.

Subsection 14A (4) Where a national monument has been discovered to which subsection (3) of this section relates, then:

- (a) the road authority carrying out the road development shall report the discovery to the Minister
- (b) subject to subsection (7) of this section, and pending any directions by the minister under paragraph (d) of this subsection, no works which would interfere with the monument shall be carried out, except works urgently required to secure its preservation carried out in accordance with such measures as may be specified by the Minister

The Minister will consult with the Director of the National Museum of Ireland for a period not longer than 14 days before issuing further directions in relation to the national monument.

The Minister will not be restricted to archaeological considerations alone, but will also consider the wider public interest.

#### **Architectural Heritage (National Inventory) and Historic Monuments (Miscellaneous Provisions) Act, 1999**

This Act provides for the establishment of a national inventory of architectural heritage and historic monuments.

Section 1 of the act defines "architectural heritage" as:

- (a) all structures and buildings together with their settings and attendant grounds, fixtures and fittings,
- (b) groups of such structures and buildings, and,
- (c) sites which are of architectural, historical, archaeological, artistic, cultural, scientific, social or technical interest.

Section 2 of the Act states that the Minister (for Arts, Heritage, Gaeltacht and the Islands) shall establish the NIAH, determining its form and content, defining the categories of architectural heritage, and specifying

to which category each entry belongs. The information contained within the inventory will be made available to planning authorities, having regard to the security and privacy of both property and persons involved.

Section 3 of the Act states that the minister may appoint officers, who may in turn request access to premises listed in the inventory from the occupiers of these buildings. The officer is required to inform the occupier of the building why entry is necessary, and in the event of a refusal, can apply for a warrant to enter the premises.

Section 4 of the Act states that obstruction of an officer or a refusal to comply with requirements of entry will result in the owner or occupier being guilty of an offence.

Section 5 of the Act states that sanitary authorities who carry out works on a monument covered by this Act will as far as possible preserve the monument with the proviso that its condition is not a danger to any person or property, and that the sanitation authority will inform the Minister that the works have been carried out.

The provisions in the Act are in addition to and not a substitution for provisions of the National Monument Act (1930–94), and the protection of monuments in the National Monuments Act is extended to the monuments covered by the Architectural Heritage (National Inventory) and Historic Monuments (Miscellaneous Provisions) Act (1999).

**The Local Government (Planning and Development) Act, 1999**, which came into force on 1st January 2000, provides for the inclusion of protected structures into the planning authorities' development plans and sets out statutory regulations regarding works affecting such structures, thereby giving greater statutory protection to buildings. All structures listed in the development plan are now referred to as Protected Structures and enjoy equal statutory protection. Under the 1999 Act the entire structure is protected, including a structures interior, exterior, the land lying within the curtilage of the protected structure and other structures within that curtilage. This Act was subsequently repealed and replaced by the Planning and Development Act, 2000, where the conditions relating to the protection of architectural heritage are set out in Part IV of the Act.

### **Protected Structures, Curtilage & Attendant Grounds**

A protected structure is defined in the Local Government (Planning and Development) Act 2000 as any structure or specified part of a structure, which is included in the planning authorities' Record of Protected Structures (RPS). Section 57 (1) of the 2000 Act states that "...the carrying out of works to a protected structure, or a proposed protected structure, shall be exempted development only if those works would not materially affect the character of

- (a) the structure, or
- (b) any element of the structure, which contributes to its special architectural, historical, archaeological, artistic, cultural, scientific, social or technical interest.

By definition, a protected structure includes the land lying within the curtilage of the protected structure and other structures within that curtilage and their interiors. The notion of curtilage is not defined by legislation, but according to Architectural Heritage Protection Guidelines for Planning Authorities (2004) and for the purposes of this report it can be taken to be the parcel of land immediately associated with that structure and which is (or was) in use for the purpose of the structure.

The attendant grounds of a structure are lands outside the curtilage of the structure but which are associated with the structure and are intrinsic to its function, setting and/or appreciation. The attendant grounds of a country house could include the entire demesne, or pleasure grounds, and any structures or features within it such as follies, plantations, lakes etc.



# Archaeological, Architectural and Cultural Heritage Designations

## Archaeological Heritage

### *Record of Monuments and Places (RMP)*

Archaeological monuments are protected under the National Monuments Acts 1930–2004. Section 12 (1) of the 1994 Act provides that the Minister shall establish and maintain a record of monuments and places where the Minister believes there are monuments, such record to be comprised of a list of monuments and relevant places and a map or maps showing each monument and relevant place in respect of each county in the State. This is referred to as the Record of Monuments and Places and monuments are entered into it are referred to as Recorded Monuments. Section 12(3) of the 1994 Act provides that where the owner or occupier (other than the Minister) of a monument or place included in the Record, or any other person proposes, to carry out, or to cause or permit the carrying out of, any work at or in relation to such monument or place, he or she shall give notice in writing to the Minister of the proposal to carry out work and shall not, except in the case of urgent necessity and with the consent of the Minister commence the work until two months after the giving of notice. This time will allow the National Monuments Service to consider the proposed works and how best to proceed to further the protection of the monument.

### *National Monuments in State Care: Ownership and Guardianship*

Section 16 of the 1930 Act provides that where the Minister is the owner of a national monument then the Minister shall admit the public to enter on and view such monument upon payment of such (if any) admission charge and subject to such conditions and limitations as the minister shall prescribe. Section 11 of the 1994 Act provides that the Minister may acquire by agreement or compulsorily any monument that is in his or her opinion a national monument or any part of such monument.

The provisions of Section 14 of the 1930 Act regarding prohibition of injury to national monuments which apply to national monuments subject to a Preservation Order apply similarly to national monuments of which the Minister is guardian. Section 12(1) of the 1930 Act provides that the Minister shall maintain a national monument of which he or she is the guardian.

According to the National Policy on Town Defences (2008), within the meaning of the National Monuments Acts, all town defences are considered national monuments by reason of the historical, architectural, and archaeological interest attaching to them. This status relates as much to their protection as to the nature of consent and management of works on, or close, to them.

### *National Monuments with a Preservation Order or Temporary Preservation Order*

Where it appears to the Minister that a monument, considered to be a national monument, is in danger or is actually being destroyed or falling into decay the minister may by preservation order or temporary preservation order, undertake the preservation of the monument. A temporary preservation order will remain in force for six months and then expire.

### *National Monument in Local Authority Ownership/Guardianship*

Monuments which may be defined as national monuments are also in the ownership or guardianship of Local Authorities which have similar responsibilities under the National Monuments Acts (1930-2004) to the DAHG.

These monuments are not included in any specific dataset. Each Local Authority will make a determination whether the preservation of a monument in its ownership/guardianship, is a matter of national importance because of the archaeological, architectural, historical, traditional or artistic importance attaching to that monument. There are no definitive lists of these sites available; such determinations are generally made on a site by site basis as the need arises.

*United Nations Educational, Scientific and Cultural Organisation (UNESCO) World Heritage Sites (including candidate UNESCO World Heritage Sites on Tentative List)*

Ireland ratified the World Heritage Convention in 1991 and as such pledges to conserve not only the World Heritage sites situated on its territory, but also to protect its national heritage. Ireland has two World Heritage Sites that are considered to have outstanding universal value (OUV) namely Skellig Michael, an island monastery off the west coast of Kerry and Brú na Bóinne, or the Bend of the Boyne Ensemble in the Boyne Valley, County Meath

World Heritage sites are sites that have an international value that has been clearly articulated. They are cultural properties considered to be of 'Outstanding Universal Value' that are part of the 'world heritage of Mankind as a whole' and 'deserve protection and transmission to future generations' (2).

A Tentative List is an inventory of those properties which each State Party (i.e. those signed up to the convention) intends to consider for nomination on to the World Heritage List. States Parties submit a tentative list of their properties which they consider to be cultural and/or natural heritage of outstanding universal value and therefore suitable for inscription on the World Heritage List.

## **Architectural Heritage**

### *Protected Structures*

A protected structure is a structure that is considered to be of 'special interest', which is broadly defined by the Planning and Development Act, 2000 as structures of architectural, historical, archaeological, artistic, cultural, scientific, social or technical point interest. The 2000 Act requires each planning authority to compile and maintain a Record of Protected Structures (RPS). The RPS is a mechanism for the statutory protection of the architectural heritage and is listed in every County Development Plan and Town Development Plan.

By definition, a protected structure includes the land lying within its curtilage and other structures within that curtilage and their interiors. The notion of curtilage is not defined by legislation, but according to Architectural Heritage Protection Guidelines for Planning Authorities (2011) it is that parcel of land immediately associated with the structure and which is (or was) in use for the purpose of the structure.

The attendant grounds of a structure are the lands outside the curtilage of the structure but which are associated with the structure and are intrinsic to its function, setting and/or appreciation.

### *Architectural Conservation Areas*

Architectural Conservation Areas (ACA) are places, groups of structures or townscapes that are of special architectural, historical, archaeological, artistic, cultural scientific, social or technical interest/value or contribute to the appreciation of Protected Structures. ACAs and candidate ACAs are listed in every County Development Plan and Town Development Plan.

### *National Inventory of Architectural Heritage (NIAH)*

The National Inventory of Architectural Heritage (NIAH) places a statutory basis under the provisions of the Architectural Heritage (National Inventory) and Historic Monuments (Miscellaneous Provisions) Act 1999. The NIAH's role is to identify record and evaluate the post-1700 architectural heritage of Ireland. It aims to promote the appreciation of, and contributes to the protection of, the built heritage by systematically recording a representative sample of that built heritage on a nationwide basis. The surveys provide the basis for the recommendations of the Minister to the planning authorities for the inclusion of particular structures in the Record of Protected Structures (RPS).

### *The NIAH Historic Garden and Designed Landscape Survey*

Historic landscapes, gardens and demesnes are usually, but not always, associated with Protected Structures and therefore do not always have statutory protection. The NIAH designed landscapes and

historic gardens survey is a preliminary non-statutory survey, based on a paper study using historic map sources and aerial photography, some of the sites that have been identified on it have long since been subsumed into a farming landscapes particularly when the principal house has been demolished

# APPENDIX L3

## Inventory of Recorded Archaeological and Architectural Heritage Features between 2–3km, 3–4km and 5-6km of the Wind Farm



ENVIRONMENTAL BALANCE IN DESIGN AND CONSTRUCTION

## TABLE OF CONTENTS

### Page

<b>1.</b>	<b>Inventory of Recorded Archaeological Heritage Features between 2–3km and 3–4 km of the Wind Farm</b>	<b>1</b>
1.1.	<i>Introduction</i>	1
1.2.	<i>Archaeology - Recorded Archaeological Monuments (RMP sites) within 2–3km radius of the wind farm</i>	1
1.3.	<i>Recorded Archaeological Monuments (RMP sites) within 3–4km radius of the wind farm</i>	5
1.4.	<i>Recorded Archaeological Monuments (RMP sites) within 4-5km radius of the wind farm</i>	7
<b>2.</b>	<b>Inventory of Recorded Archaeological and Architectural Heritage Features between 2–3km and 3–4 km of the Wind Farm</b>	<b>10</b>
2.1.	<i>Introduction</i>	10
2.2.	<i>Record of Protected Structures sites within 2–3km radius of the wind farm</i>	10
2.3.	<i>Recorded Archaeological Monuments (RMP sites) within 3–4km radius of the wind farm</i>	11
2.4.	<i>Recorded Archaeological Monuments (RMP sites) within 4-5km radius of the wind farm</i>	13
<b>3.</b>	<b>National Inventory of Architectural Heritage Garden Survey sites</b>	Error! Bookmark not def

## 1. INVENTORY OF RECORDED ARCHAEOLOGICAL HERITAGE FEATURES BETWEEN 2–3KM AND 3–4 KM OF THE WIND FARM

### 1.1. Introduction

Recorded archaeological, architectural heritage sites within and up to 2km of the proposed wind farms (where there is a potential for a direct impact or an indirect or direct impact on their setting) are listed and discussed in the main EIS text. This appendix provides an inventory of sites that are located in a 2km–3km, 3–4km and 4km -5km band radius from the wind farm.

The sites are indicated in (Figures 14.4–8).

### 1.2. Archaeology - Recorded Archaeological Monuments (RMP sites) within 2–3km radius of the wind farm

The following is a list of RMP sites with a 2-3Km radius

RMP Ref.	Townland	ITM		Site Type
ME047-004----	Anneville Or Clonard Old	665691	745097	Castle - motte
ME047-007----	Anneville Or Clonard Old	665959	744980	Church
ME047-007001-	Anneville Or Clonard Old	665959	744980	Architectural fragment
ME047-007002-	Anneville Or Clonard Old	665959	744980	Font
ME047-007003-	Anneville Or Clonard Old	665959	744980	Stone trough
ME047-008----	Anneville Or Clonard Old	665846	744884	Field system
ME047-015----	Anneville Or Clonard Old	665753	744933	Burial
ME047-007004-	Anneville Or Clonard Old	665935	744970	Graveyard
KD008-008001-	Ardkill	671015	735324	Castle - tower house
KD008-008002-	Ardkill	671072	735225	Settlement deserted - medieval
KD008-009001-	Ardkill	671153	734988	Church
KD008-009002-	Ardkill	671161	734998	Graveyard
KD008-009003-	Ardkill	671161	734998	Ecclesiastical enclosure
KD008-008005-	Ardkill	671118	735115	Road - hollow-way
KD008-008003-	Ardkill	671028	735312	Bawn
KD008-008004-	Ardkill	671073	735144	Road - hollow-way
KD002-012----	Ballindoolin	665052	737965	Road - unclassified togher
KD018-025----	Ballintine	676134	722529	Settlement deserted - medieval
KD018-002----	Ballintine	676216	722979	Mound
KD018-001001-	Ballintine	676185	723311	Church
KD018-001002-	Ballintine	676184	723311	Graveyard
KD018-001003-	Ballintine	676183	723311	Cross-slab
KD018-001004-	Ballintine	676183	723311	Cross-slab
KD018-001005-	Ballintine	676183	723311	Cross-slab
KD018-001006-	Ballintine	676183	723311	Cross-slab

RMP Ref.	Townland	ITM		Site Type
KD018-001007-	Ballintine	676183	723311	Cross-slab
KD018-001008-	Ballintine	676183	723311	Architectural fragment
KD004-029----	Ballykeelan	683178	737310	Enclosure
KD004-043----	Ballykeelan, Ballyteige, Corcoran stown, Kilbride, Ovidstown (Cloncurry Ed)	682400	737600	Battlefield
ME048-025----	Ballynakill	674018	744229	Ritual site - holy well
KD003-010----	Cadamstown	670415	738086	Ringfort - rath
KD017-005----	Cappanargid	668584	721430	Ringfort - rath
KD017-006----	Cappanargid	668926	721709	Ringfort - rath
KD008-001002-	Carbury	668624	735082	Castle - Anglo-Norman masonry castle
KD008-001003-	Carbury	668624	735082	House - fortified house
KD008-001004-	Carbury	668624	735082	Designed landscape feature
KD008-001005-	Carbury	668628	734989	Church
KD008-001006-	Carbury	668627	734989	Graveyard
KD008-002----	Carbury	668936	735046	Redundant record
KD008-003----	Carbury	668540	734641	Barrow - mound barrow
KD008-004----	Carbury	668508	734782	Barrow - ring-barrow
KD008-005----	Carbury	668556	734696	Barrow - ring-barrow
KD008-001001-	Carbury	668587	735084	Castle - motte
KD008-001007-	Carbury	668627	734989	Mausoleum
KD008-001008-	Carbury	668627	734990	Wall monument
KD008-001009-	Carbury	668627	734990	Wall monument
KD008-001010-	Carbury	668627	734990	Wall monument
KD003-017----	Clonagh (Cadamstown Ed)	672434	739009	Castle - tower house
KD003-025----	Clonagh (Cadamstown Ed)	672950	738336	Moated site
KD003-017002-	Clonagh (Cadamstown Ed)	672434	739009	Armorial plaque
KD003-017003-	Clonagh (Cadamstown Ed)	672434	739009	Architectural fragment
KD008-007----	Collinstown (Carbury Ed)	671080	736196	Enclosure
KD009-007----	Coologmartin	678124	732727	Enclosure
KD008-034----	Derrinturn	670559	732647	Ritual site - holy well
KD009-005----	Donadea	684262	734466	Ringfort - rath
KD009-014001-	Donadea Demesne	683443	733172	Church
KD009-015001-	Donadea Demesne	683442	733034	Castle - tower house
KD009-014002-	Donadea Demesne	683443	733172	Church
KD009-014003-	Donadea Demesne	683437	733189	Tomb - effigial
KD009-014004-	Donadea Demesne	683444	733160	Graveyard
KD009-015002-	Donadea Demesne	683442	733034	House - fortified house
KD009-014005-	Donadea Demesne	683438	733189	Font
KD009-015003-	Donadea Demesne	683442	733034	Armorial plaque
KD009-014006-	Donadea Demesne	683418	733181	Font
KD017-059----	Drinnanstown North	670647	719857	Enclosure

RMP Ref.	Townland	ITM		Site Type
KD017-050----	Drinnanstown South	671684	719559	Hut site
KD017-051----	Drinnanstown South	671661	719437	Metalworking site
KD017-052----	Drinnanstown South	671727	719891	Habitation site
KD017-053----	Drinnanstown South	671575	719431	Metalworking site
KD017-054----	Drinnanstown South	671560	719393	Excavation - miscellaneous
KD017-055----	Drinnanstown South	671534	719415	Excavation - miscellaneous
KD017-056----	Drinnanstown South	671441	719385	Excavation - miscellaneous
KD009-026----	Dunmurragehill	682503	732567	Enclosure
KD009-011001-	Dunmurragehill	682355	732760	Church
KD009-012----	Dunmurragehill	682448	732719	Metalworking site
KD009-013----	Dunmurragehill	682673	732487	Standing stone
KD009-011002-	Dunmurragehill	682355	732760	Graveyard
KD009-011003-	Dunmurragehill	682355	732760	Children's burial ground
KD004-033----	Dysart	679032	738815	Moated site
KD013-021----	Grangeclare West	676514	723859	Castle - unclassified
KD013-021001-	Grangeclare West	676514	723859	Bawn
ME048-027----	Johnstown	677262	740485	Fulacht fia
ME048-020----	Johnstown	677233	739999	Earthwork
ME048-031001-	Johnstown	676803	740447	Enclosure
ME048-031002-	Johnstown	676805	740439	Burial ground
ME048-035----	Johnstown	677461	740149	Furnace
ME048-036----	Johnstown	677462	740156	Furnace
ME048-031003-	Johnstown	676845	740434	Children's burial ground
ME048-031004-	Johnstown	676793	740442	Industrial site
ME048-031005-	Johnstown	676824	740423	Water mill - vertical-wheeled
KD004-001----	Johnstown (Cadamstown Ed)	675944	739635	Cross
KD004-002----	Johnstown (Cadamstown Ed)	676105	739710	Armorial plaque (present location)
KD004-003----	Johnstown (Cadamstown Ed)	676226	739763	Architectural fragment
KD004-036----	Johnstown (Cadamstown Ed)	674937	739235	Enclosure
KD003-004----	Killinagh	665507	738520	Castle - unclassified
KD017-013----	Kilmoney North	669296	719660	Fulacht fia
KD017-014----	Kilmoney North	669295	719493	Fulacht fia
KD017-015----	Kilmoney North	669593	719765	Fulacht fia
KD017-016----	Kilmoney North	669745	719550	Fulacht fia
KD017-017----	Kilmoney North	669856	719674	Ringfort - rath
KD017-018003-	Kilmoney North	670164	719709	Ecclesiastical enclosure
KD017-018004-	Kilmoney North	670164	719709	Church
KD017-034----	Kilmoney North	670445	719860	Ringfort - rath
KD017-018006-	Kilmoney North	670326	719771	Burial
KD017-018001-	Kilmoney North	670232	719838	Field system
KD017-018005-	Kilmoney North	670326	719772	Cairn - unclassified



RMP Ref.	Townland	ITM		Site Type
KD017-018002-	Kilmoney North	670325	719772	Enclosure
KD003-002001-	Kilrainy	666150	739923	Ecclesiastical enclosure
KD003-002002-	Kilrainy	666161	739932	Church
KD003-002003-	Kilrainy	666153	739927	Graveyard
KD003-002004-	Kilrainy	666211	739974	Bullaun stone
KD003-002005-	Kilrainy	666209	739998	Road - road/trackway
KD001-003----	Kilrathmurry	665856	743105	Moated site
KD001-001----	Kilrathmurry	665946	743265	Enclosure
KD003-001002-	Kilrathmurry	665856	741255	Graveyard
KD003-001001-	Kilrathmurry	665856	741255	Ringfort - unclassified
KD003-001003-	Kilrathmurry	665856	741255	House - indeterminate date
KD012-014----	Lullybeg,Lullymore East	669601	724602	Road - class 1 togher
KD012-006----	Lullymore East	671011	725473	Ecclesiastical site
KD012-006001-	Lullymore East	671019	725465	Ecclesiastical enclosure
KD012-006002-	Lullymore East	671019	725465	Ecclesiastical enclosure
KD012-006003-	Lullymore East	670953	725407	Enclosure
KD012-006004-	Lullymore East	671008	725505	Church
KD012-006005-	Lullymore East	671014	725505	Graveyard
KD012-015----	Lullymore East	670690	724604	Road - gravel/stone trackway - peatland
KD012-006006-	Lullymore East	670754	725457	Field system
KD012-006007-	Lullymore East	671018	725501	Bullaun stone
KD012-006009-	Lullymore East	670993	725494	Cross-inscribed stone
KD012-006010-	Lullymore East	670993	725494	Cross-inscribed stone
KD012-006011-	Lullymore East	670993	725495	Cross-inscribed stone
KD012-014001-	Lullymore East	669818	724783	Road - class 1 togher
KD012-014002-	Lullymore East	669512	724520	Road - class 1 togher
KD012-006020-	Lullymore East	671019	725465	Cross-inscribed stone
KD012-006012-	Lullymore East	671019	725465	Cross-inscribed stone
KD012-006018-	Lullymore East	671019	725465	Cross
KD012-006019-	Lullymore East	671019	725465	Cross
KD012-006013-	Lullymore East	671019	725465	Cross-inscribed stone
KD012-006014-	Lullymore East	671019	725465	Cross-inscribed stone
KD012-006015-	Lullymore East	671019	725465	Cross-inscribed stone
KD012-006016-	Lullymore East	671019	725465	Cross-inscribed stone
KD012-006017-	Lullymore East	671019	725465	Cross-inscribed stone
KD012-006021-	Lullymore East	671019	725465	Cross-inscribed stone
ME047-006----	Mulphedder	665662	744909	Enclosure
ME047-005----	Mulphedder	665578	745010	Castle - ringwork
ME047-017----	Mulphedder	665547	744836	Burial ground
KD003-012----	Mylerstown (Drehid Ed)	670476	737186	Castle - tower house
KD003-013----	Mylerstown (Drehid Ed)	671231	736725	Ringfort - rath
KD008-019----	Rathmore (Windmill Cross Ed)	670566	731153	Moated site

RMP Ref.	Townland	ITM		Site Type
KD008-019001-	Rathmore (Windmill Cross Ed)	670550	731131	Icehouse
KD012-008----	Ticknevin	669495	729999	Bullaun stone
KD012-012001-	Ticknevin	669582	729919	Church
KD012-012002-	Ticknevin	669582	729919	Graveyard

### 1.3. Recorded Archaeological Monuments (RMP sites) within 3–4km radius of the wind farm

RMP Ref.	Townland	ITM		Site Type
ME047-001----	ANNEVILLE Or CLONARD OLD	665123	745641	Enclosure
ME047-002----	ANNEVILLE Or CLONARD OLD	665313	745357	Enclosure
ME047-003----	ANNEVILLE Or CLONARD OLD	665396	745335	Ringfort - rath
ME047-018----	ANNEVILLE Or CLONARD OLD	665749	745647	Burial
KD002-011----	Ballindoolin	664495	737203	Mound
KD002-013----	Ballindoolin	664587	737851	Moated site
KD002-013001-	Ballindoolin	664587	737852	Building
KD018-026----	Ballintine	676424	722433	Enclosure
ME048-021----	Ballycarn	679643	740865	Enclosure
ME048-022----	Ballycarn	679394	740515	Enclosure
ME041-017----	Ballyclare	672395	747384	Ringfort - rath
ME048-001----	Ballynakill	675017	744461	Ringfort - rath
KD004-037----	Ballynakill (Cloncurry Ed)	681394	740602	Redundant record
KD004-021014-	Ballynakill (Cloncurry Ed)	680813	740260	Excavation - miscellaneous
KD004-021001-	Ballynakill (Cloncurry Ed), Ballyvoneen, Cloncurry (Ikeathy & Oughterany By., Cloncurry Ed), Kilbrook	680423	740992	Settlement deserted - medieval
KD004-041----	Ballyvoneen	680433	740675	Ring-ditch
KD004-021013-	Ballyvoneen	680415	740780	Field boundary
KD017-025001-	Boherkill	669955	718700	Ringfort - rath
KD017-025002-	Boherkill	669919	718633	Field system
KD017-057----	Boherkill	669839	718416	Enclosure
KD003-014001-	Cadamstown	671230	738801	Church
KD003-015001-	Cadamstown	671407	739169	Children's burial ground
KD003-015002-	Cadamstown	671405	739155	Cross
KD003-014002-	Cadamstown	671209	738799	Graveyard
KD003-014003-	Cadamstown	671209	738799	Wall monument
KD008-018----	Carbury	668974	734466	Armorial plaque (present location)
KD008-006002-	Carbury	668502	734287	Graveyard
KD008-006001-	Carbury	668480	734296	Church
KD002-008----	Carrick (Carrick Ed)	664027	736596	Ritual site - holy well
KD002-009----	Carrick (Carrick Ed)	663987	736856	Castle - hall-house

RMP Ref.	Townland	ITM		Site Type
KD002-010002-	Carrick (Carrick Ed)	664041	736842	Church
KD002-010001-	Carrick (Carrick Ed)	664024	736829	Ecclesiastical enclosure
KD002-010003-	Carrick (Carrick Ed)	664029	736848	Graveyard
KD002-009001-	Carrick (Carrick Ed)	663987	736857	Sheela-na-gig
KD018-014----	Carrick (Rathernan Ed)	675344	719999	Ecclesiastical enclosure
KD003-016001-	Clonagh (Cadamstown Ed)	671975	739475	Cross
KD003-016002-	Clonagh (Cadamstown Ed)	671975	739475	Burial ground
KD004-021007-	Cloncurry (Ikeathy & Oughterany By., Cloncurry Ed)	680533	740765	Cross
KD004-021008-	Cloncurry (Ikeathy & Oughterany By., Cloncurry Ed)	680751	740863	Road - hollow-way
KD010-009001-	Clonshanbo	685352	734423	Church
KD010-009002-	Clonshanbo	685353	734423	Graveyard
KD017-027----	Conlanstown	672135	718170	Settlement deserted - medieval
KD017-058----	Conlanstown	671533	718971	Enclosure
KD008-022----	Coolavacoose	666996	733677	Ringfort - unclassified
KD008-012----	Demesne	669453	733991	Ritual site - holy well
OF012-009----	Derries (Coolestown By.)	667516	729648	Enclosure
KD009-033----	Gilltown (Timahoe North Ed)	679775	731875	Road - class 1 togher
ME048-028----	Johnstown	678389	740941	Habitation site
ME048-029----	Johnstown	677965	740617	Excavation - miscellaneous
ME048-030----	Johnstown	678261	740702	Excavation - miscellaneous
KD004-038----	Kilbride	683193	738396	Moated site
KD004-027----	Kilbride	682803	738675	Ringfort - rath
KD017-045002-	Killyguire	667409	721153	Enclosure
KD017-045003-	Killyguire	667409	721092	Enclosure
KD017-045001-	Killyguire	667282	721097	Enclosure
KD018-003----	Kilmeage	677561	722628	Castle - tower house
KD018-036----	Kilmeage	677433	722942	Graveyard
KD003-031----	Kilmorebrannagh	674312	740509	Fulacht fia
KD003-026----	Kilrainy	665691	740335	Barrow - ring-barrow
KD003-033----	Kilrainy	666019	740085	Kiln - lime
KD002-001----	Kilrathmurry	664909	741551	Moated site
KD003-028----	Kilrathmurry	665638	740448	Excavation - miscellaneous
KD003-032----	Kilrathmurry	665437	740525	Metalworking site
KD013-024----	Lowtown (Kilmeage South Ed)	678024	725018	Ringfort - unclassified
ME041-023----	Moyfin	669360	748130	Burial ground
ME048-033----	Newcastle	676434	740689	Furnace
ME048-034----	Newcastle	676348	740711	Kiln
KD017-010----	Newtown (Killinthomas Ed)	668120	720501	Ringfort - rath
ME048-019----	Posseckstown	677306	741056	Ringfort - rath
KD017-039----	Rathangan (Rathangan Ed)	668229	719856	Church

RMP Ref.	Townland	ITM		Site Type
KD017-049----	Rathangan (Rathangan Ed)	668127	719689	Standing stone
KD017-012----	Rathangan Demesne	668396	719550	Ritual site - holy well
ME047-016----	Towlaght	664553	743659	Fulacht fia
ME047-020----	Towlaght	665108	744918	Font (present location)

#### 1.4. Recorded Archaeological Monuments (RMP sites) within 4-5km radius of the wind farm

RMP Ref.	Townland	ITM		Site Type
KD002-002----	Brackagh	663890	740067	Ritual site - holy well
KD002-003----	Brackagh	663812	739611	Ritual site - holy well
KD002-004----	Brackagh	663975	739469	Burial ground
KD002-005----	Brackagh	663894	739420	Castle - unclassified
KD004-021003-	Cloncurry (Ikeathy & Oughterany By., Cloncurry Ed)	680130	741405	Castle - motte
KD004-021005-	Cloncurry (Ikeathy & Oughterany By., Cloncurry Ed)	680200	741340	Church
KD004-021010-	Cloncurry (Ikeathy & Oughterany By., Cloncurry Ed)	680216	741498	Enclosure
KD004-021015-	Cloncurry (Offaly East By., Cloncurry Ed)	680315	741260	Building
KD004-021016-	Cloncurry (Ikeathy & Oughterany By., Cloncurry Ed)	680200	741340	Graveyard
KD004-024----	Kilbrook	681697	741241	Ritual site - holy well
KD004-025----	Killickaweeny	683421	740190	Architectural fragment
KD004-026001-	Grange	683557	739450	Ecclesiastical enclosure
KD004-026002-	Grange	683556	739482	Church
KD004-026003-	Grange	683578	739478	Graveyard
KD004-026004-	Grange	683535	739482	Building
KD004-026005-	Grange	683523	739509	Building
KD004-026006-	Grange	683536	739509	Building
KD004-026007-	Grange	683568	739503	Children's burial ground
KD004-028----	Grange	684003	738925	Ringfort - rath
KD004-034----	Kilbrook	681719	741177	Mound
KD004-035----	Ballynakill (Cloncurry Ed)	681698	740951	Ringfort - rath
KD004-039----	Cappagh	683433	740525	Enclosure
KD004-039001-	Cappagh	683433	740525	House - early medieval
KD004-039002-	Cappagh	683433	740525	House - early medieval
KD004-039003-	Cappagh	683433	740525	House - early medieval
KD004-039004-	Cappagh	683433	740525	Metalworking site
KD008-013----	Clonkeen	666386	733037	Ringfort - unclassified
KD008-014----	Clonkeen	666563	732745	Castle - unclassified
KD008-014001-	Clonkeen	666563	732745	Bawn

RMP Ref.	Townland	ITM		Site Type
KD008-015----	Ballyhagan	668122	732556	Ringfort - rath
KD009-016----	Kilmurry (Dunfierrth Ed)	684432	731487	Building
KD009-025----	Kilmurry (Donadea Ed)	684537	731476	Burnt mound
KD010-010----	CLONSHANBO, FARRANADUM (Balraheen ED) (Detached Portion)	685647	734400	Ecclesiastical enclosure
KD013-001----	Coolearagh West	678323	728740	Ringfort - rath
KD013-002----	Coolearagh West	678274	727837	Ringfort - rath
KD017-011----	Mullantine, Rathangan (Rathangan Ed)	667016	719470	Settlement deserted - medieval
KD017-011001-	Rathangan (Rathangan Ed)	666898	719648	Ringfort - rath
KD017-011004-	Rathangan (Rathangan Ed)	666899	719649	Castle - ringwork
KD017-011005-	Rathangan (Rathangan Ed)	666935	719354	Designed landscape feature
KD017-011006-	Rathangan (Rathangan Ed)	666929	719464	Well
KD017-026----	Boherkill, Guidenstown North	669985	717520	Moated site
KD017-028001-	Carrickanearla, Kilmoney South	671934	717352	Mound
KD017-028002-	Carrickanearla	671920	717360	Castle - unclassified
KD017-028003-	Carrickanearla	671898	717340	Well
KD017-028004-	Carrickanearla	671922	717358	Inauguration site
KD017-028005-	Carrickanearla	671928	717376	Architectural fragment
KD017-029----	Christianstown	674026	718779	Cross
KD017-030----	Rathangan Demesne	667516	718540	Ringfort - rath
KD017-038----	Boherkill	669885	717570	Enclosure
KD017-044----	Rathangan (Rathangan Ed)	666656	721289	Settlement deserted - medieval
KD017-046----	Kilmoney South	672135	717610	Enclosure
KD018-004----	Kilmeage	677748	722864	Ringfort - rath
KD018-005----	Grangeclare East	678079	723311	Ringfort - rath
KD018-006001-	Rathernan	677987	722311	Church
KD018-006002-	Rathernan	677987	722311	Graveyard
KD018-006003-	Rathernan	677989	722311	Ecclesiastical enclosure
KD018-013----	Dunbyrne	676857	720377	Ringfort - rath
KD018-015----	Carrick (Rathernan Ed)	675379	719923	Ritual site - holy well
KD018-016----	Russellstown (Rathernan Ed)	677509	721150	Ringfort - rath
KD018-021001-	Carrick (Rathernan Ed)	675851	720485	Mound
KD018-021002-	Carrick (Rathernan Ed)	675850	720485	Cist
KD018-021003-	Carrick (Rathernan Ed)	675848	720487	Designed landscape - folly
KD018-021004-	Carrick (Rathernan Ed)	675851	720485	Inscribed stone
KD018-024----	Barnacrow	676054	719870	Enclosure
KD022-001003-	Dunmurry West	671356	716989	Mound
ME041-006----	Killyon	668295	749103	Church
ME041-012----	Ballymahon	670569	749033	Mound
ME041-013----	Lionsden	670978	748956	Barrow - mound barrow
ME041-014----	Castlerickard	671650	748950	Castle - motte

RMP Ref.	Townland	ITM		Site Type
ME041-014001-	Castlerickard	671640	748915	Church
ME041-016----	Molerick	665457	747054	Moated site
ME041-021----	Lionsden	671250	748173	Fulacht fia
ME041-022----	Lionsden	671257	748137	Fulacht fia
ME046-009----	Ticroghan	663455	743412	Church
ME046-010----	Ticroghan	663494	743277	Bastioned fort
ME048-016----	Newcastle	674966	741621	Ringfort - rath
ME048-018----	Newcastle	675623	741649	Castle - tower house
ME048-023----	Connellstown	675278	743497	Enclosure
ME048-037----	Ballinderrin	680487	741830	Burial
ME048-039----	Johnstown	678755	741419	Enclosure
ME048-040----	Posseckstown	678310	741869	Enclosure

## 2. INVENTORY OF RECORDED ARCHAEOLOGICAL AND ARCHITECTURAL HERITAGE FEATURES BETWEEN 2–3KM AND 3–4 KM OF THE WIND FARM

### 2.1. Introduction

Recorded architectural heritage sites within and up to 2km of the proposed wind farms (where there is a potential for a direct impact or an indirect or direct impact on their setting) are listed and discussed in the main EIS text. This appendix provides an inventory of the RPS sites located in a 2km– 3km, 3–4km and 4km–5km band radius from the wind farm. The sites are indicated in (Figures 14.4–8).

### 2.2. Record of Protected Structures sites within 2–3km radius of the wind farm

RPS Ref	NIAH Ref	Townland	NGR		Site Type
MH048-103	0	Johnstown	277364	240049	Johnstown House
MH047-109	0	Ballinderry	273304	243436	Ballinderry House
MH047-103	0	Mulpedder	265676	244663	Mulpedder Farmhouse
MH047-107	14339004	Anneville	266016	244941	St Finians Church of Ireland
MH047-105	14339003	Anneville	265899	245045	Detached House
MH047-106	14339002	Anneville	265901	245056	Postbox
MH047-104	14339001	Church Hill Glebe	265856	245433	Clonard Glebe House (detached)
MH041-105	0	Ballynabarney	267769	246646	Ballynabarney thatch
B03-08	11900308	Kilglass	268734	239671	Kilglass House
B03-11	0	Kilmore	272724	240750	Kilmore House
B03-16	11900303	Kilmore (Cadamstown Ed)	273282	241548	Kilmore Bridge, Royal Canal Main Line
B03-18	11900310	Killinagh	265521	239180	Saint Brigid's Catholic Church
B04-01	0	Ballykeelan	283269	237280	Ballykeelan Moated Site
B04-03	0	Johnstown (Carbury BY)	276289	239736	Johnstown Bridge - 2 Medieval Carved Stones
B04-13	11801001	Johnstown(Carbury BY)	275821	239871	Windmill in ruins Johnstown Bridge
B04-14	11801004	Johnstown (Carbury BY)	276185	239748	Catholic Church and interior of St. Patrick's
B04-18	11801006	Johnstown(Carbury BY)	276192	239693	Johnstown Bridge
B04-21	11801005	Johnstown (Carbury BY)	276223	239711	Johnstown National School (former), Johnstown Bridge
B04-22	11801007	Johnstown (Carbury BY)	276038	239608	Johnstown Bridge, Co. Kildare
B04-23	11801009	Johnstown (Carbury BY)	275915	239672	Johnstown Bridge, Co. Kildare
B04-25	11801015	Johnstown (Carbury BY)	276623	239944	Johnstown Bridge, Johnstown Bridge, Co. Kildare
B08-01	0	Carbury	268691	235075	Carbury Castle
B08-02	0	Carbury	268694	234982	Remains of Church
B08-03	0	Carbury	268654	235075	Carbury Moat



RPS Ref	NIAH Ref	Townland	NGR		Site Type
B08-04	0	Carbury	268580	234771	Carbury Tumulus and Earthworks
B08-05	0	Ardkill	271134	235201	Ardkill Ancient Field System
B08-06	0	Ardkill	271079	235316	Ruins of Ardkill Castle
B08-10	0	Demense	269982	233925	Newbury Hall
B08-11	0	Ardkill	270163	234887	Ardkill House, Carbury
B08-15	0	Carbury	268876	234635	Church of Ireland
B08-16	0	Carbury	268922	234699	Stable Building opposite Church of Ireland Church
B08-19	11900805	Derrinturn	270495	233082	Derrinturn House
B08-22	11900804	Derrinturn	270474	232778	The Turn Inn
B08-23	11900801	Ticknevin	269757	230291	Ticknevin/Unrill Bridge, (aka Hartley Bridge), Grand Canal Main Line
B08-24	11900803	Derrinturn	270627	232612	Trinity Catholic Church
B09-01	0	Donadea Demesne	283511	233142	Donadea Canopied tomb & Medieval Church in Ruins
B09-02	0	Donadea Demesne	283521	233008	Donadea Castle
B09-05	0	Donadea	284326	234438	Ringfort
B09-06	0	Donadea Demesne	283511	233012	Donadea Demesne - Castle, including 17th - 19th century additions
B09-07	11900904	Dunmurragehill	282746	233335	The Range, Range Cross Roads, Co. Kildare
B09-18	11900905	Donadea Demesne	283502	233165	Saint Peter's Church
B12-01	0	Lullymore East	271119	225458	Lullymore Monastic Enclosure
B13-42	11901304	Derrymullen	276178	226196	Bond Bridge, Grand Canal Main Line, Derrymullen, Allenwood
B13-43	11901305	Derrymullen	276237	225493	Ford Bridge, Feeder Canal, Grand Canal Barrow Line, South of Allenwood
B17-17	11901705	Pluckerstown(Connell By)	274602	220986	Pluckerstown Corn Mill (former)
B18-23	11901801	Newpark	275433	222434	Pim Bridge, Grand Canal Milltown Feeder

### 2.3. Recorded Archaeological Monuments (RMP sites) within 3–4km radius of the wind farm

RPS Ref	NIAH Ref	Townland	NGR		Site Type
MHO48-216	14340015	Johnstown	277973	241025	Lee's Enfield, the Coach Yard
MHO48-215	14340015	Johnstown	277969	241025	Former Post Office
MHO48-214	14340014	Johnstown	277912	241040	House
MHO48-212	14340012	Johnstown	277795	241052	Pair of Semi detached Houses
MHO48-211	14340012	Johnstown	277789	241055	Pair of Semi detached Houses



RPS Ref	NIAH Ref	Townland	NGR		Site Type
MH048-213	14340013	Johnstown	277797	241071	Water pump
MH048-206	0	Johnstown	277600	241146	Apartments ( former RIC Barracks )
MH048-203	14340009	Posseckstown	277520	241189	Railway workers House
MH048-201	14340008	Posseckstown	277463	241193	Bridge
MH048-204	14340009	Posseckstown	277520	241198	Railway workers House
MH048-202	14340007	Posseckstown	277480	241202	Railway Station water tank
MH048-200	14340006	Newcastle	277435	241204	Bridge
MH048-207	14340004	Posseckstown	277603	241256	Former Station Master's House
MH048-205	14340003	Posseckstown	277585	241311	Railway Station water tank
MH048-208	14340002	Posseckstown	277607	241322	Signal Box
MH048-209	14340001	Posseckstown	277666	241347	Stone buildings in Railway Station
MH048-100	0	Newcastle	274071	241450	Blackwater Aquaduct
MH047-100	14339005	Towlaght	265175	244902	St Finians Catholic Church
MH047-102	14339008	Towlaght	265284	244928	St Finians Shrine
MH047-101	14339006	Towlaght	265253	244941	St Finians Catholic Church Railings
MH041-107		Brackanrainey	270227	248152	Brackanrainey thatch
B02-01	0	Carrick	264053	236837	Carrick Castle
B02-05	0	Carrick	264099	236818	Carrick Church (in ruins)
B02-08	0	Ballindoolin	264764	237255	Ballindoolin House
B03-01	0	Cadamstown	271482	239149	Cadamstown Medieval Cross, Socket and part of Cross
B03-03	0	Clonagh	272068	239462	Base of Cross
B03-04	0	Cadamstown	271298	238774	Church (in ruins)
B03-07	0	West of Enfield	274072	241453	Blackwater Aqueduct, Royal Canal Main Line
B04-15	11900403	Ballyvoneen	280647	240609	Ballyvoneen House
B04-27	11900404	Newtown (Ikeathy BY)	282692	238939	Newtown School (former)
B04-28	11900405	Newtown (Ikeathy BY)	282668	238971	Newtown Catholic Church (old)
B08-07	0	Demesne	269514	233971	Trinity Well at Newbury Hall
B08-08	0	Carbury	269028	234451	Carved Stone in Carbury Village (house opposite Garda Barracks)
B08-09	0	Carbury	269249	234506	Carved Stone on Council Store at Carbury
B08-14	0	Oldcourt (Carbury BY)	265764	234817	Oldcourt House
B08-17	11900807	Carbury	269025	234443	Carbury House , Co. Kildare
B08-20	11900806	Carbury	269011	234042	Carbury (Former Carbury Rectory)
B09-03	0	Hodgestown (Clane BY)	279009	231173	Disused Burial Ground
B09-17	11900902	Staplestown	282274	231805	Saint Benignus's Catholic Church
B13-13	0	lowtown (connell BY)	277771	225525	Lowtown Depot

RPS Ref	NIAH Ref	Townland	NGR		Site Type
B13-21	0	Grangeclare Little	277664	225046	Lowtown House
B17-04	0	Boherkill	269008	218682	Boherkill Forge (including horseshoe arch)
B17-06	0	Kilmoney North	269901	219053	Kilmoney House
B17-08	11901710	Punchersgrange	273274	219114	Punchersgrange House
B18-01	0	Ballintine	276533	221581	Church ruins and Fr. Moore's Grave at Allen Church Yard
B18-05	0	Ballintine	276696	221861	Allen Catholic Church
B18-08	0	Kilmeage	277497	222924	Church of Ireland
B18-17	11901802	Kilmeage	277377	223023	Kilmeage
B18-24	11901805	Russellstown (Connell By)	276640	221676	Allen Parochial House, Allen, Co. Kildare

#### 2.4. Recorded Archaeological Monuments (RMP sites) within 4-5km radius of the wind farm

RPS Ref	NIAH Ref	Townland	NGR		Site Type
MH048-210	14340010	Newcastle	277753	241452	The Royal Canal
MH046-103	0	Ticroghan	263541	243248	Ticroghan
MH041-104	14404104	Boraheen	267571	248505	Saint Mary's former Roman Catholic Chapel
MH041-103	0	Boraheen	267540	248595	Boraheen (Killyon) Church
MH041-109	14404107	Lionsden	270509	248727	Lionsden farmhouse
MH041-112	14404108	Castlerickard	271694	248887	Saint Patrick's Church of Ireland Church
MH041-113	14404109	Castlerickard	271703	248895	Swifte Mausoleum
MH041-110	0	Lionsden	270912	248976	Lionsden
MH041-106	0	Killyon	268231	249224	Killyon Manor
B02-02	0	Brackagh	263931	240021	Brackagh Holy Well - "Lady Well"
B02-04	0	Carrick	263447	237266	Witches' Stone, Carrick Hill
B04-06	0	Cloncurry (Ikeathy BY)	280273	241320	Cloncurry Church Ruins and Mausoleum
B04-07	0	Cloncurry (Ikeathy BY)	280204	241381	Cloncurry Moat
B04-12	0	Cappagh	282807	241030	Cappagh Windmills in ruins
B04-16	11900402	Cappagh	282199	241245	Cappagh House
B09-14	0	Kilnamoragh South	284279	231868	Kilnamoragh House
B10-07	0	Clonshanbo	285705	234286	Killeen Moat
B13-12	11806004	Robertstown	279000	225123	Binns Bridge, Grand Canal Main Line, Robertstown
B13-14	11806001	Robertstown West	278656	224388	Annsborough House and Railings

RPS Ref	NIAH Ref	Townland	NGR		Site Type
B13-20	11806010	Robertstown West	278706	224722	Robertstown House, Robertstown, Co. Kildare
B13-28	11806006	Robertstown West	279038	225006	Robertstown R.I.C. Barracks, Main St., Robertstown
B13-31	11806011	Robertstown West	278814	224671	Robertstown House Gate lodge
B13-33	11806013	Robertstown West	278941	225157	Robertstown, Co. Kildare
B13-34	11806014	Robertstown East	279030	225089	Robertstown, Co. Kildare
B13-35	11806015	Robertstown	279088	225014	Section of Canal, Robertstown
B17-12	11810037	Rathangan	266842	219411	Rathangan Lodge, (Bracknagh Rd.) Portarlinton Rd.
B17-13	11810036	Rathangan	266928	219400	Oakley House, Bracknagh Rd.
B17-14	11810035	Rathangan	266950	219436	Bracknagh Rd.
B17-18	11810001	Rathangan	267294	219410	D & T Dillon, Market Square, Chapel Street, Rathangan
B17-19	11810002	Rathangan (Rathangan Ed)	267291	219393	D & T Dillon, Market Square, Rathangan, Co. Kildare
B17-20	11810003	Rathangan	267319	219312	Rathangan, Co. Kildare
B17-21	11810006	Rathangan (Rathangan Ed)	267264	219518	Rathangan Parochial Hall, Chapel Street, Rathangan
B17-22	11810007	Rathangan	267067	219428	Leinster Street (main street), Rathangan, Co. Kildare
B17-23	11810010	Rathangan	267123	219403	Main Street, Rathangan, Co. Kildare
B17-24	11810012	Rathangan	267091	219417	Rathangan Presbytery, Main Street, Rathangan, Co. Kildare
B17-25	11810014	Rathangan (Rathangan Ed)	267049	219440	Leinster Street, Rathangan, Co. Kildare
B17-26	11810015	Rathangan	267384	219237	Rathangan Bridge, Grand Canal Barrow Line
B17-28	11810019	Rathangan	267532	219528	New Street, Rathangan, Co. Kildare
B17-29	11810022	Rathangan	267129	219425	Leinster Street, Rathangan, Co. Kildare
B17-30	11810023	Rathangan	267118	219433	Leinster Street, Rathangan, Co. Kildare
B17-31	11810024	Rathangan (Rathangan Ed)	267110	219440	Leinster Street, Rathangan, Co. Kildare
B17-32	11810027	Rathangan	267061	219476	Rathangan Garda Síochána Station, Leinster St., Rathangan
B17-33	11810028	Rathangan	267052	219484	Leinster Street, Rathangan, Co. Kildare
B17-34	11810032	Rathangan	267079	219585	Rathangan Church, Leinster Street (off), Rathangan
B17-35	11810034	Rathangan	266970	219437	Portarlinton Rd., Rathangan, Co. Kildare
B17-36	11810038	Rathangan (Rathangan Ed)	267377	219274	Bridge Street, Rathangan, Co. Kildare
B17-37	11810039	Rathangan	267481	219579	St. John's Convent (former), New Street, Rathangan

RPS Ref	NIAH Ref	Townland	NGR		Site Type
B17-38	11810044	Rathangan	267069	219469	Leinster Street, Rathangan, Co. Kildare
B17-39	11810045	Rathangan	267075	219465	Leinster Street, Rathangan, Co. Kildare
B17-40	11810047	Rathangan	266984	219435	Portarlinton Road, Rathangan, Co. Kildare
B17-41	11810048	Rathangan	267551	219467	Sally Corn Mill (former), New Street (off), Rathangan
B17-42	11810049	Rathangan	267601	219469	Sally Corn Mill (former), New Street (off), Rathangan
B17-43	11810051	Rathangan	267494	219308	Bridge Street (off), Rathangan, Co. Kildare
B18-10	0	Carrick (connell By)	275912	220459	Hill of Allen Tower
B18-18	11901804	Rathernan	278071	222456	Kilmeage Rectory (Rathernan House)

## APPENDIX L4

# Archaeology, Architectural and Cultural Heritage Illustrations



ENVIRONMENTAL BALANCE IN DESIGN AND CONSTRUCTION

Illus. 14. 1	View north along the townland boundary between Boolykeagh and Ballynakill .....	7
Illus. 14. 2	Sites and Monuments Record Map showing the possible location of a castle site (KD011-007) in Calf Field .....	8
Illus. 14. 3	Down Survey Map 1656 (the plot # 57 is thought to be Calf field, north is towards the bottom) and Noble and Keenans Map 1752.....	8
Illus. 14. 4	Aerial view of CH2, a crop mark in Moyvally townland suggesting a circular enclosure and possible annex .....	9
Illus. 14. 5	Vernacular structure in Moyvally CH3.....	9
Illus. 14. 6	Thatched cottage along the local road that divides the Ballynakill cluster (CH4).....	10
Illus. 14. 7	Aerial view of Ballynadrumny (KD001-019001-003) .....	10
Illus. 14. 8	Church and graveyard at Ballynadrumny (KD001-019001-003), panoramic view towards the north from within the graveyard .....	11
Illus. 14. 9	View south along the Royal Canal .....	11
Illus. 14. 10	Canal workers house (RPS MH047-204).....	12
Illus. 14. 11	The Railway Bridge (foreground, RPS MH047-202) and the canal aqueduct (RPS MH047-201).....	12
Illus. 14. 12	Moyvally Canal Bridge .....	13
Illus. 14. 13	J. Furey's Pub, Moyvally.....	13
Illus. 14. 14	Ballyonan Corn Mill view towards the west (in the direction of Clonard) .....	14
Illus. 14. 15	Ballina (Ballyna) House.....	14
Illus. 14. 16	Outbuildings associated with Ballina (Ballyna) House, modern structures to the north.....	15
Illus. 14. 17	Aerial view Ballina (Ballyna) House (Google earth).....	15
Illus. 14. 18	Ballina (Ballyna) House as shown on the first edition OS map 1838.....	16
Illus. 14. 19	View towards the north in the direction of the Ballynakill cluster and the M4 overpass from the northwestern corner of Ballina (Ballyna) Demesne .....	16
Illus. 14. 20	Garrisker House, containing the protected bell-tower, basement, and outbuildings (RPS B03-10), as shown on the first edition OS Map.....	17
Illus. 14. 21	Garrisker aerial view .....	17
Illus. 14. 22	Protected structures in Broadford nineteenth century former school (former) (RPS B03-13) Saint Mary's Catholic Church (RPS B03-17) (after NIAH).....	18
Illus. 14. 23	Bog butter recently found during milling operations.....	18
Illus. 14. 24	View across the bog looking south, the low hill of Carbury can be seen in the middle distance.....	19
Illus. 14. 25	Water filled drains across the milled bog .....	19

Illus. 14. 26	Nurney Church and Graveyard (KD003-008001 and 002) as shown on first edition (1837-8) and revised edition OS map (1909) .....	20
Illus. 14. 27	Nurney Graveyard, view southeast in the direction of the Windmill cluster .....	20
Illus. 14. 28	Children's burial ground in Balrinnet (KD003-006) .....	20
Illus. 14. 29	The ruined castle of Mylerstown (KD003-012).....	21
Illus. 14. 30	Mylerstown church and graveyard (KD003-011001, -002).....	21
Illus. 14. 31	View looking north-northeast of the tree-lined entrance avenue to Belrennet House view (RPS B03-09) .....	22
Illus. 14. 32	View into the northernmost access road into Williamstown House (RPS B03-06).....	22
Illus. 14. 33	Entrance Gates into the southernmost entrance to Williamstown House (RPS B03-06) .....	23
Illus. 14. 34	First edition OS Map (1838) showing Williamstown Demesne and Aerial photograph (Google) .....	23
Illus. 14. 35	Ballinderry House view from the entrance gates looking north and close up view.....	24
Illus. 14. 36	View south of the entrance gate(unused) towards the Windmill cluster.....	24
Illus. 14. 37	Coolayna House (RPS B08-27), Teelough House (RPS B08-26) and The Haggard (RPS B08-25) on the revised 1910 OS Map.....	24
Illus. 14. 38	Aerial view with the overgrown ringfort site (KD004-011) and the possible habitation site (KD004-010) to the northeast indicated by green dots .....	25
Illus. 14. 39	View towards ringfort site (KD088-01101) in Drehid, the site is overgrown with trees and undergrowth.....	25
Illus. 14. 40	View west towards the ringfort (KD088-010), in Ballynamullagh	26
Illus. 14. 41	Aerial view of the site of a of moated site (KD008-024) (indicated by the green dot) .....	26
Illus. 14. 42	View south into the field where Turbine T47 is located .....	27
Illus. 14. 43	Possible moated site in the same field as Turbine T47 (CH7) .....	27
Illus. 14. 44	Location of the former dry island within the bog,The yellow area is the cluster land parcel, the inset shows the island on the first ed OS map (1838) isolated within the bog. ....	28
Illus. 14. 45	Lowlying landscape with deep dranainge ditches at Turbine T46	28
Illus. 14. 46	Roofless ruin of a vernacular structure in Hortland .....	29
Illus. 14. 47	Aerial view of Dunfiirth medieval church and graveyard site (KD004-005001-003) and the 'site of' a castle (KD004-006) at the Dunfiirth Cross Roads .....	29
Illus. 14. 48	View from within the Dunfiirth Graveyard west towards the church ruin.....	30
Illus. 14. 49	Examples of the carved stone work within Dunfiirth Church and Graveyard .....	30

Illus. 14. 50	View into Newpark House (B09-09) from the public road .....	31
Illus. 14. 51	First edition OS Map of Newpark House and associated parkland (shaded in grey), aerial view showing that little has changed.....	31
Illus. 14. 52	Aerial view of Knockanally and ground level view of Knockanally House (RPS B04-10) .....	32
Illus. 14. 53	View towards the southwest of the golf course, the cluster is located in the low lying area in this direction .....	32
Illus. 14. 54	Knockanally House gate lodge.....	33
Illus. 14. 55	First edition OS Map (1837) and revised 1909 OS Map showing the alteration to Knockanally Demesne. The house extended to the east taking in the road and the River Blackwater and a new house was built on the hill top. ....	33
Illus. 14. 56	Aerial map showing the historical extent of the former demesne of Hortland, the layout of the attendant grounds/parkland remains (see 1 <sup>st</sup> ed OS map inset) and the lands outside of this have been altered and subdivided into regular fields.....	34
Illus. 14. 57	Aerial view of the a church and graveyard site (KD004-018) and motte (KD004-017 and RPS B04-08) in Hortland enclosed by mature trees and a ground level view looking towards the gate-lodge and the motte and church site (to the right and left) (after Google earth).....	34
Illus. 14. 58	Plaque on Bishops Chair Bridge which was on the original crossing of the river .....	35
Illus. 14. 59	Site of Turbine 28 Derrybrennan.....	35
Illus. 14. 60	Site of Turbine 27 in the Derrybrennan cluster .....	36
Illus. 14. 61	Bog of Allen Nature Centre in Lullymore West. In the foreground is the 1798 memorial and early medieval cross slabs (KD012-020) inserted into modern rubble stone wall.....	36
Illus. 14. 62	Ringfort (KD017-004) taken from the southwest in Cloncumber townland.....	37
Illus. 14. 63	View of ringfort (KD017-004) from proposed turbine 33 (view to the west) .....	37
Illus. 14. 64	Bushfield House (RPS 17-09) .....	38
Illus. 14. 65	Glenaree Bridge and Lock 22 Grand Canal Barrow Line (RPS B17-16).....	38
Illus. 14. 66	Mill Race feature shown on the revised 6-inch map, item of cultural heritage (CH9-CH11), marked and highlighted as 3, the Grand Canal runs to the south marked as 4.....	39
Illus. 14. 67	Drumsru townland -delisted RMP (KD017-040) site - area where the saddle quern was identified.....	39
Illus. 14. 68	The Slate River which forms the northern boundary of the site, moated site (KD017-003) to the north.....	40
Illus. 14. 69	Protected Structure (B17-05A) iron railing footbridge over the River Slate and tributary .....	40



Illus. 14. 70	Agar Bridge (B17-15) .....	41
Illus. 14. 71	Feighcullen Glebe House (RPS B17-11), Feighcullen House (RPS B17-10), view to Feighcullen Church of Ireland Church (RPS B17-07) looking north and view to the recorded monuments: church and graveyard (RMP KD017-009003 and 005-) and field system (KD017-009002).....	41
Illus. 14. 72	Rathangan Architectural Conservation Area, Kildare County Development Plan 2011–2017, Rathangan is located within 4-5km of the western extent of the Cloncumber cluster .....	42
Illus. 14. 73	Ringfort (KD017-011001) and castle-ringwork (KD017-011004), view in the direction of Cloncumber along the canal at Rathangan. Streetscape view east out of the town along New Street (after Google).....	42
Illus. 14. 74	Fortified house/ castle KD008-00102-03) on the northern shoulder of Carbury Hill .....	43
Illus. 14. 75	View to the south from adjacent to the fortified house, the mortuary chapel (national monument) can be seen within the walled graveyard to the right; close up view of the mortuary chapel .....	43
Illus. 14. 76	RMP map showing the location of the recorded monuments on Carbury and its relationship with Carbury village and Newbury Demesne to the southeast. ....	44
Illus. 14. 77	Aerial view of the earthworks sites and upstanding features on Carbury Hill.....	44
Illus. 14. 78	Newberry Demesne aerial view and first edition OS Map 1838 and view of Newberry Hall from the fortified house on Carbury Hill (in the middle distance) .....	45
Illus. 14. 79	Aerial view of Lullymore Ecclesiastic site (RMP KD012-006) with the walled graveyard centrally placed within the enclosure.....	46
Illus. 14. 80	Lullymore ecclesiastical site (KD012-006) looking south and the northern outer ditch and bank boundary of the surrounding enclosure .....	46
Illus. 14. 81	Lullymore graveyard (RPS B12-01), three cross inscribed slabs in modern graveyard wall and bullaun stone.....	47
Illus. 14. 82	View towards Cloncumber cluster (to the south) from Lullymore monastic site car park .....	47
Illus. 14. 83	Grange Castle – tower house (KD002-007) National Monument, elevation, view taken from the southwest, Grange Castle and surrounding structures and walls view from east looking west and view to the west towards the walled garden.....	48
Illus. 14. 84	Aerial view of the Carrick Complex containing a tower house, church, graveyard and enclosure; Carrick Castle - Hall House (KD002-009); Carrick church and graveyard (KD002-010).....	49
Illus. 14. 85	Aerial view of Donore Castle, Co Meath, National Monument 23250	

Illus. 14. 86	Draft Tara Skryne Landscape Conservation Area.....	50
Illus. 14. 87	AAP 3 Barnaran Townland showing the location of KD012-007 in the vicinity of the R414.....	51
Illus. 14. 88	AAP Lullymore West Townland showing the location of KD012- 016 and the proposed cable and access routes.....	51

## BALLYNAKILL CLUSTER



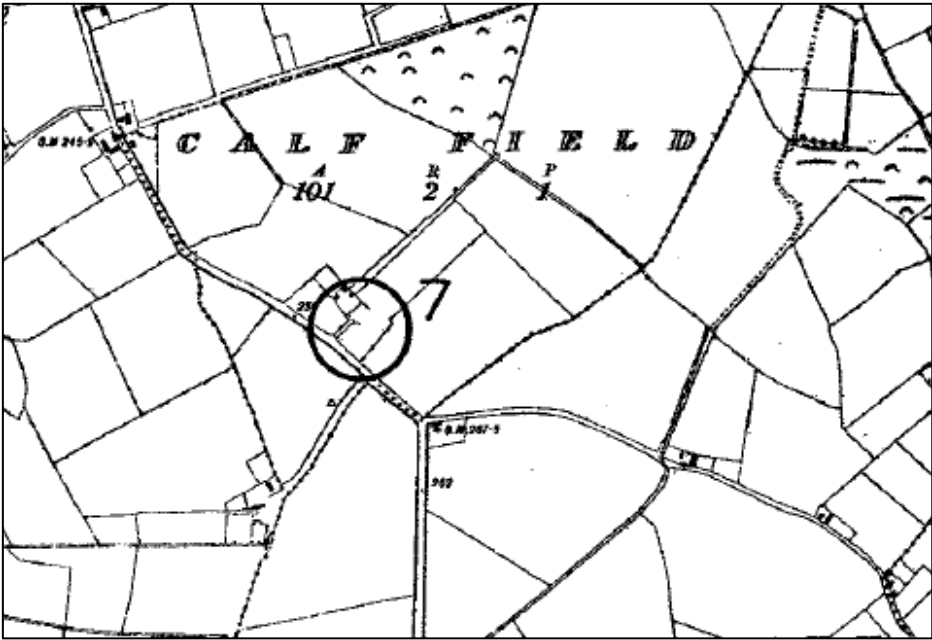
**Illus. 14. 1** View north along the townland boundary between Boolykeagh and Ballynakill



**Illus. 4. 1** CH1, view towards the northeast of the gravel ridge in Boolykeagh showing its profile



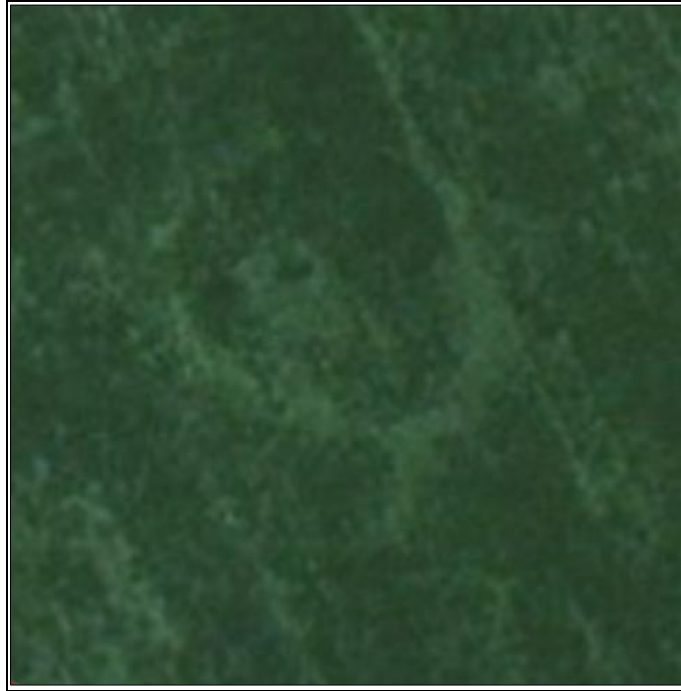
Illus. 4. 2 View north along the top of the linear gravel ridge (CH1)



Illus. 14. 2 Sites and Monuments Record Map showing the possible location of a castle site (KD011-007) in Calf Field



Illus. 14. 3 Down Survey Map 1656 (the plot # 57 is thought to be Calf field, north is towards the bottom) and Noble and Keenans Map 1752



**Illus. 14. 4** Aerial view of CH2, a crop mark in Moyvally townland suggesting a circular enclosure and possible annex

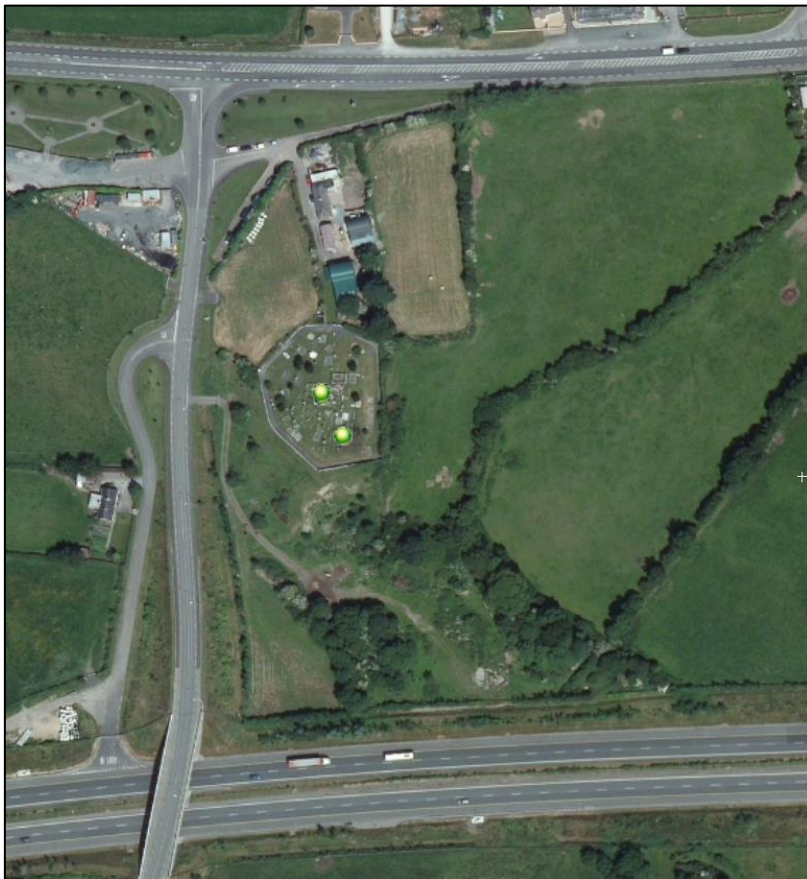


**Illus. 14. 5** Vernacular structure in Moyvally CH3





**Illus. 14. 6 Thatched cottage along the local road that divides the Ballynakill cluster (CH4)**



**Illus. 14. 7 Aerial view of Ballynadrumny (KD001-019001-003)**



**Illus. 14. 8 Church and graveyard at Ballynadrumny (KD001-019001-003), panoramic view towards the north from within the graveyard**



**Illus. 14. 9 View south along the Royal Canal**





**Illus. 14. 10 Canal workers house (RPS MH047-204)**



**Illus. 14. 11 The Railway Bridge (foreground, RPS MH047-202) and the canal aqueduct (RPS MH047-201)**





**Illus. 14. 12 Moyvally Canal Bridge**



**Illus. 14. 13 J. Furey's Pub, Moyvally**



**Illus. 14. 14 Ballyonan Corn Mill view towards the west (in the direction of Clonard)**



**Illus. 14. 15 Ballina (Ballyna) House**



**Illus. 14. 16 Outbuildings associated with Ballina (Ballyna) House, modern structures to the north**



**Illus. 14. 17 Aerial view Ballina (Ballyna) House (Google earth)**

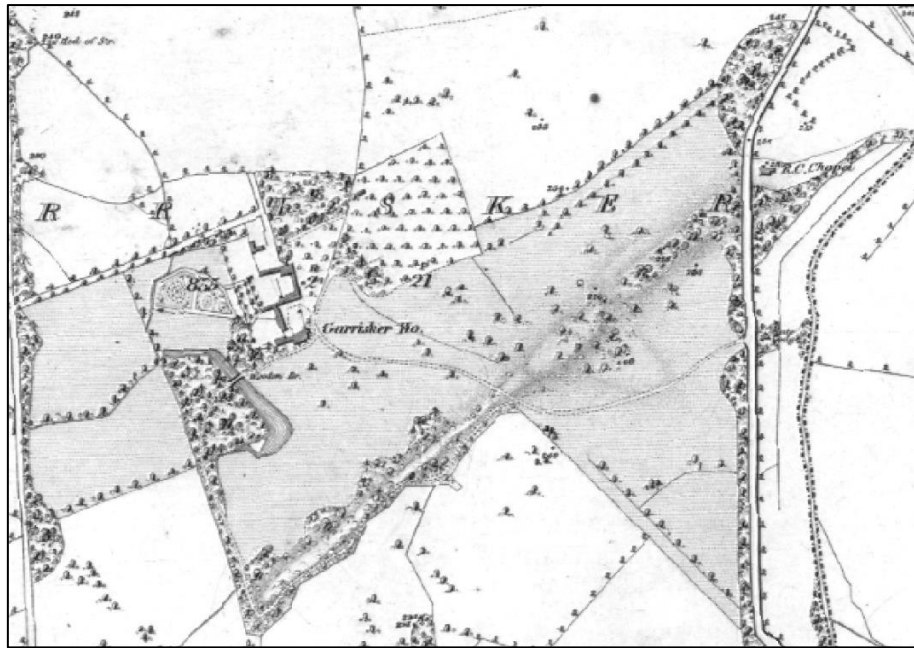




**Illus. 14. 18 Ballina (Ballyna) House as shown on the first edition OS map 1838**



**Illus. 14. 19 View towards the north in the direction of the Ballynakill cluster and the M4 overpass from the northwestern corner of Ballina (Ballyna) Demesne**



**Illus. 14. 20 Garrisker House, containing the protected bell-tower, basement, and outbuildings (RPS B03-10), as shown on the first edition OS Map**

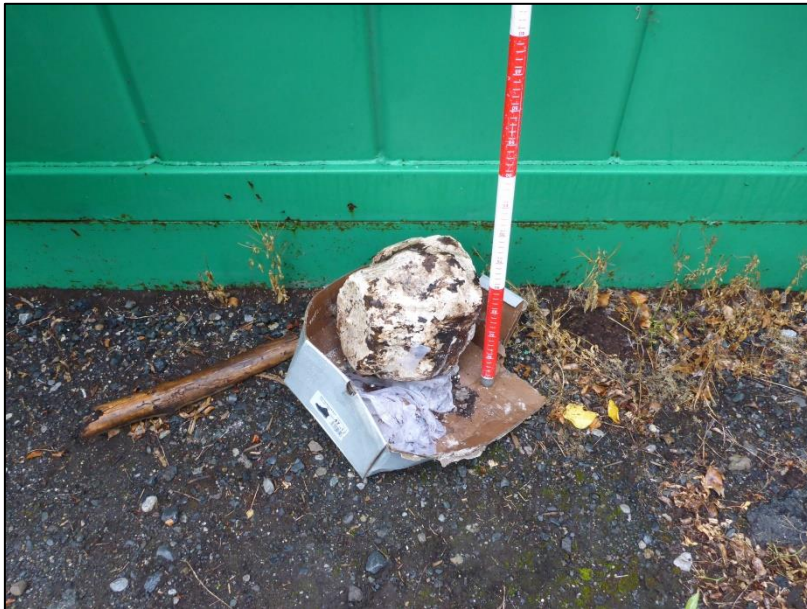


**Illus. 14. 21 Garrisker aerial view**



**Illus. 14. 22 Protected structures in Broadford nineteenth century former school (former) (RPS B03-13) Saint Mary's Catholic Church (RPS B03-17) (after NIAH)**

### **Windmill Cluster**



**Illus. 14. 23 Bog butter recently found during milling operations**

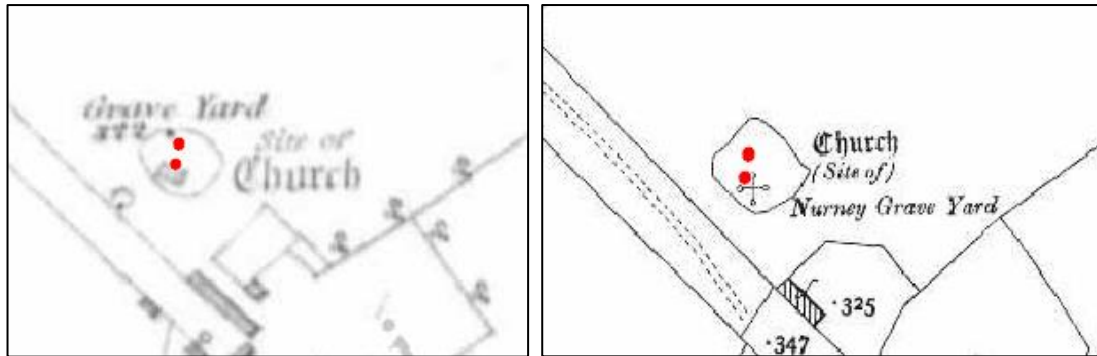




**Illus. 14. 24 View across the bog looking south, the low hill of Carbury can be seen in the middle distance**



**Illus. 14. 25 Water filled drains across the milled bog**



**Illus. 14. 26** Nurney Church and Graveyard (KD003-008001 and 002) as shown on first edition (1837-8) and revised edition OS map (1909)



**Illus. 14. 27** Nurney Graveyard, view southeast in the direction of the Windmill cluster



**Illus. 14. 28** Children's burial ground in Balrinnet (KD003-006)





**Illus. 14. 29 The ruined castle of Mylerstown (KD003-012)**



**Illus. 14. 30 Mylerstown church and graveyard (KD003-011001, -002)**



**Illus. 14. 31 View looking north-northeast of the tree-lined entrance avenue to Belrennet House view (RPS B03-09)**

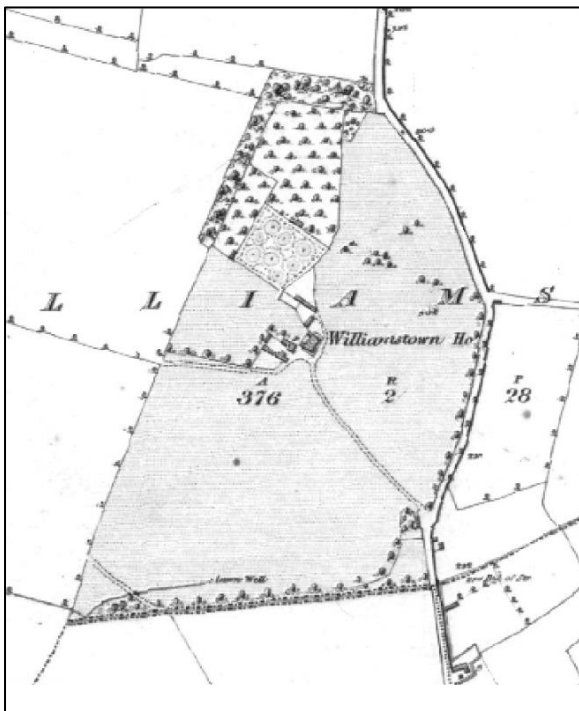


**Illus. 14. 32 View into the northernmost access road into Williamstown House (RPS B03-06)**





**Illus. 14. 33 Entrance Gates into the southernmost entrance to Williamstown House (RPS B03-06)**



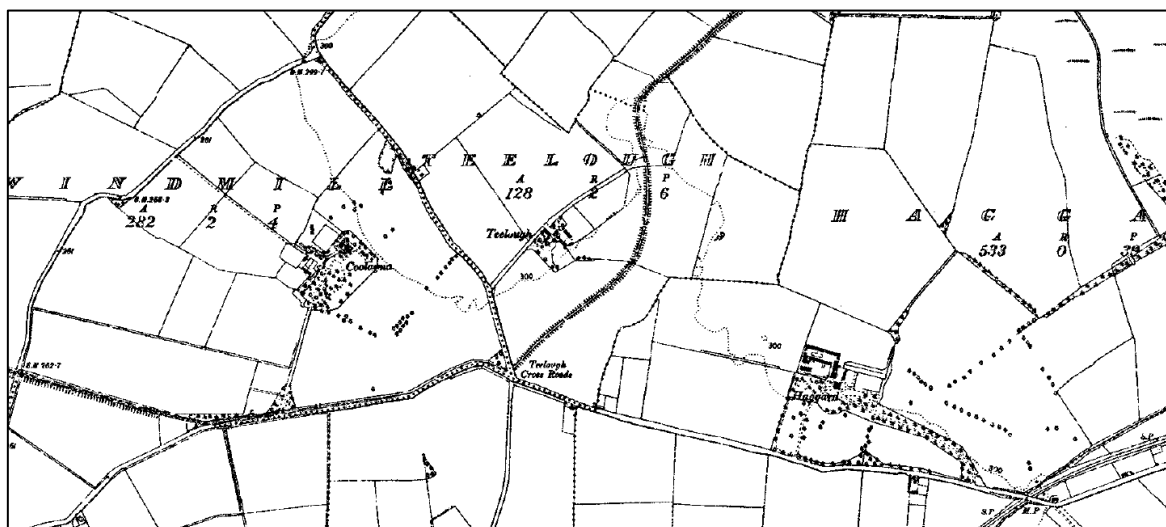
**Illus. 14. 34 First edition OS Map (1838) showing Williamstown Demesne and Aerial photograph (Google)**



**Illus. 14. 35 Ballinderry House view from the entrance gates looking north and close up view**



**Illus. 14. 36 View south of the entrance gate(unused) towards the Windmill cluster**



**Illus. 14. 37 Coolayna House (RPS B08-27), Teelough House (RPS B08-26) and The Haggard (RPS B08-25) on the revised 1910 OS Map**



## DREHID-HORTLAND CLUSTER



**Illus. 14. 38 Aerial view with the overgrown ringfort site (KD004-011) and the possible habitation site (KD004-010) to the northeast indicated by green dots**



**Illus. 14. 39 View towards ringfort site (KD088-01101) in Drehid, the site is overgrown with trees and undergrowth**



**Illus. 14. 40** View west towards the ringfort (KD088-010), in Ballynamullagh



**Illus. 14. 41** Aerial view of the site of a of moated site (KD008-024) (indicated by the green dot)



**Illus. 14. 42 View south into the field where Turbine T47 is located**



**Illus. 14. 43 Possible moated site in the same field as Turbine T47 (CH7)**





**Illus. 14. 44** Location of the former dry island within the bog, The yellow area is the cluster land parcel, the inset shows the island on the first ed OS map (1838) isolated within the bog.

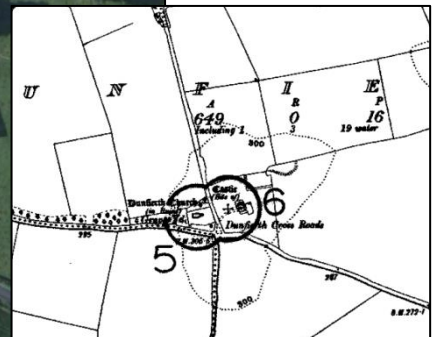


**Illus. 14. 45** Lowlying landscape with deep dranainge ditches at Turbine T46





**Illus. 14. 46 Roofless ruin of a vernacular structure in Hortland**

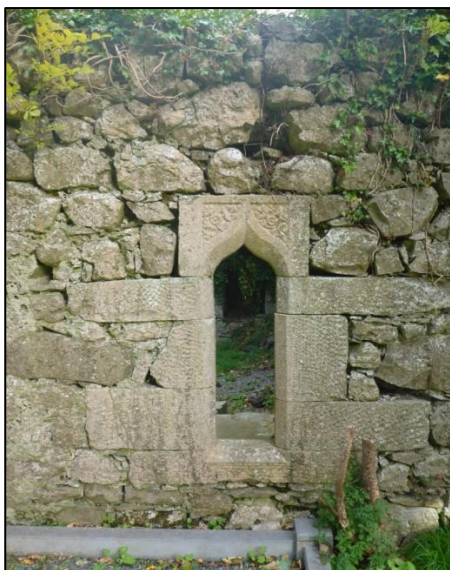


**Illus. 14. 47 Aerial view of Dunferth medieval church and graveyard site (KD004-005001-003) and the 'site of' a castle (KD004-006) at the Dunferth Cross Roads**





**Illus. 14. 48 View from within the Dunfieth Graveyard west towards the church ruin**



**Illus. 14. 49 Examples of the carved stone work within Dunfieth Church and Graveyard**



**Illus. 14. 50 View into Newport House (B09-09) from the public road**



**Illus. 14. 51 First edition OS Map of Newport House and associated parkland (shaded in grey), aerial view showing that little has changed.**





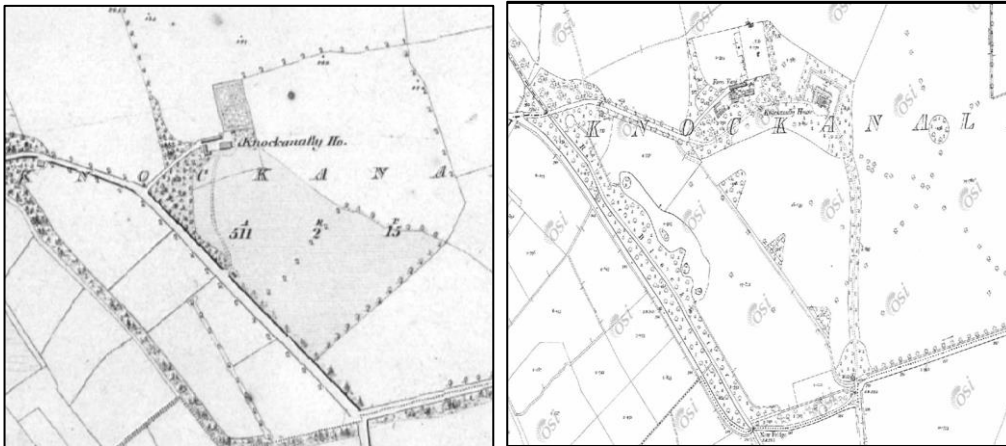
**Illus. 14. 52 Aerial view of Knockanally and ground level view of Knockanally House (RPS B04-10)**



**Illus. 14. 53 View towards the southwest of the golf course, the cluster is located in the low lying area in this direction**



**Illus. 14. 54 Knockanally House gate lodge**



**Illus. 14. 55 First edition OS Map (1837) and revised 1909 OS Map showing the alteration to Knockanally Demesne. The house extended to the east taking in the road and the River Blackwater and a new house was built on the hill top.**





**Illus. 14. 56** Aerial map showing the historical extent of the former demesne of Hortland, the layout of the attendant grounds/parkland remains (see 1<sup>st</sup> ed OS map inset) and the lands outside of this have been altered and subdivided into regular fields.



**Illus. 14. 57** Aerial view of the a church and graveyard site (KD004-018) and motte (KD004-017 and RPS B04-08) in Hortland enclosed by mature trees and a ground level view looking towards the gate-lodge and the motte and church site (to the right and left) (after Google earth)



**Illus. 14. 58 Plaque on Bishops Chair Bridge which was on the original crossing of the river**

### **Derrybrennan Cluster**



**Illus. 14. 59 Site of Turbine 28 Derrybrennan**



**Illus. 14. 60 Site of Turbine 27 in the Derrybrennan cluster**



**CAPTAIN JOHN DOORLY**

THIS MEMORIAL WAS ERECTED BY THE PEOPLE OF LULLYMORE AND SURROUNDING AREAS, TO HONOUR CAPTAIN JOHN DOORLY, WHO WAS BORN IN LULLYMORE IN 1816 HE JOINED THE UNITED IRISHMEN AND WAS IN COMMAND OF THE BATTALION WHICH CAPTURED THE TOWN OF BATHURST FROM THE BRITISH FORCES OF SIR DAVID RAE. THE TOWN WAS RECAPTURED BY THE BRITISH THROUGHOUT BATHURST BEFORE JOINING FORCES WITH THE WEXFORD IRISHMEN. CAPTAIN DOORLY WAS CAPTURED WHILE TRYING TO ESCAPE ACROSS THE BURN, AND HE WAS HANGED IN BULLINGAR. HE WAS BURIED IN BATHURST (DUBLIN).

THE WALL SURROUNDING THE MEMORIAL INCORPORATES A NUMBER OF STONES FROM THE GRAVEYARD OF LULLYMORE. THESE CROSS-INSPIRING STONES WERE PART OF THE LULLYMORE MONASTIC SETTLEMENT WHICH WAS FOUNDED BY ST. PATRICK. THE PIN STONE WHICH IS A BRIDGE CAST OF A GENTLE FINE HEAD IS THE MARK OF BOB DE JON. THE MEMORIAL, WHICH WAS DESIGNED BY HALL WEAVER, ARCHITECT, WAS UNVEILED BY HIS EXCELLENCY PATRICK J. HILARY, GOVERNOR IN ADEQUATE ON AUGUST 16th 1988.

*Go north a shorter day.*

**Illus. 14. 61 Bog of Allen Nature Centre in Lullymore West. In the foreground is the 1798 memorial and early medieval cross slabs (KD012-020) inserted into modern rubble stone wall**



## CLONCUMBER CLUSTER



**Illus. 14. 62 Ringfort (KD017-004) taken from the southwest in Cloncumber townland**



**Illus. 14. 63 View of ringfort (KD017-004) from proposed turbine 33 (view to the west)**



**Illus. 14. 64 Bushfield House (RPS 17-09)**



**Illus. 14. 65 Glenaree Bridge and Lock 22 Grand Canal Barrow Line (RPS B17-16)**



**Illus. 14. 66 Mill Race feature shown on the revised 6-inch map, item of cultural heritage (CH9-CH11), marked and highlighted as 3, the Grand Canal runs to the south marked as 4.**



**Illus. 14. 67 Drumsru townland -delisted RMP (KD017-040) site - area where the saddle quern was identified.**



**Illus. 14. 68 The Slate River which forms the northern boundary of the site, moated site (KD017-003) to the north**



**Illus. 14. 69 Protected Structure (B17-05A) iron railing footbridge over the River Slate and tributary**



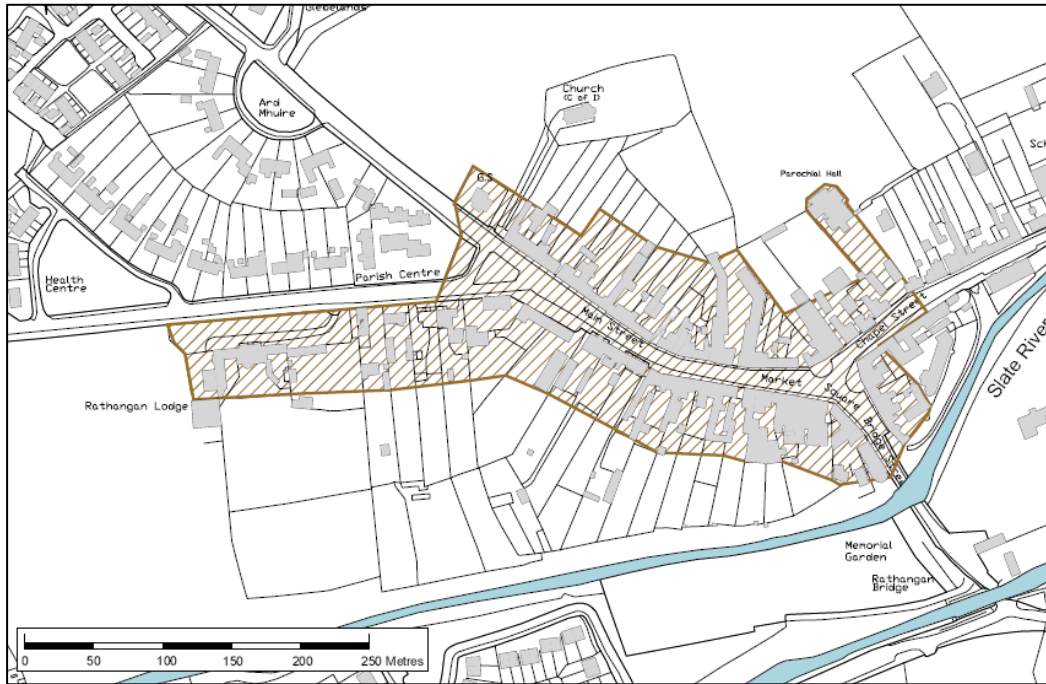


**Illus. 14. 70 Agar Bridge (B17-15)**



**Illus. 14. 71 Feighcullen Glebe House (RPS B17-11), Feighcullen House (RPS B17-10), view to Feighcullen Church of Ireland Church (RPS B17-07) looking north and view to the recorded monuments: church and graveyard (RMP KD017-009003 and 005-) and field system (KD017-009002)**





**Illus. 14. 72 Rathangan Architectural Conservation Area, Kildare County Development Plan 2011–2017, Rathangan is located within 4-5km of the western extent of the Cloncumber cluster**



**Illus. 14. 73 Ringfort (KD017-011001) and castle-ringwork (KD017-011004), view in the direction of Cloncumber along the canal at Rathangan. Streetscape view east out of the town along New Street (after Google)**

## NATIONAL MONUMENTS WITHIN 5KM OF THE MAIGHNE WIND FARM

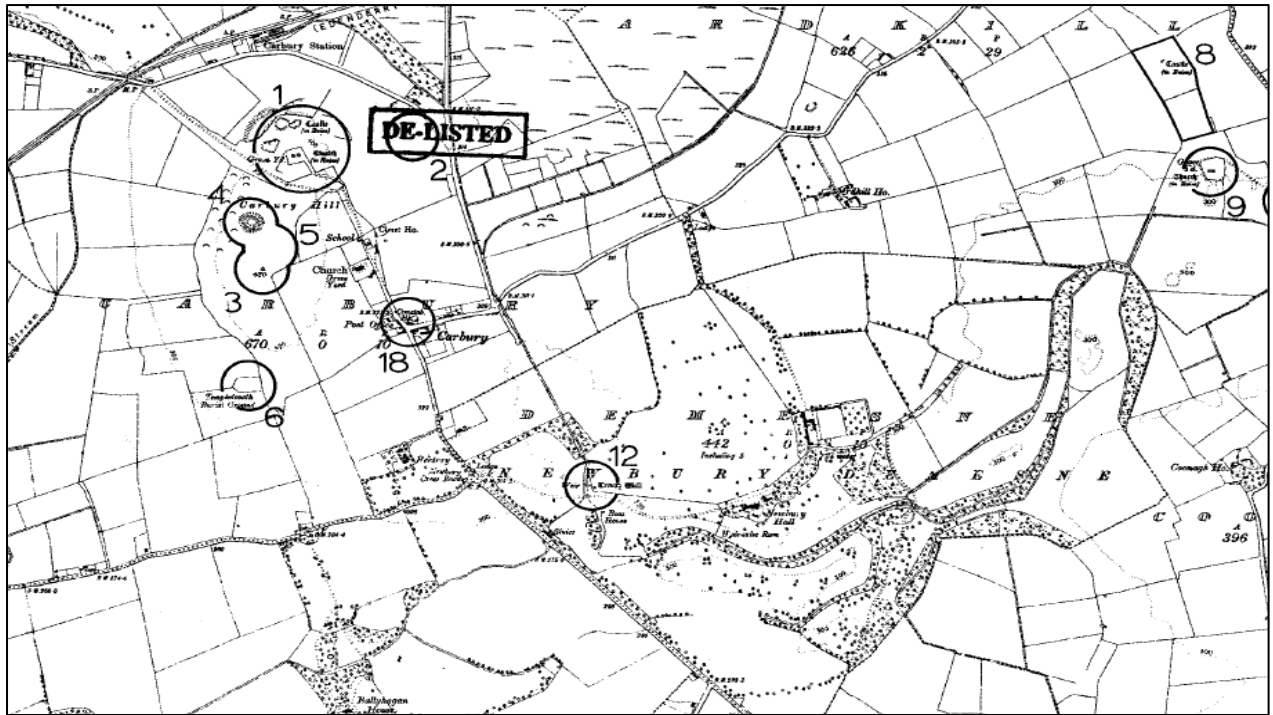


**Illus. 14. 74 Fortified house/ castle KD008-00102-03) on the northern shoulder of Carbury Hill**



**Illus. 14. 75 View to the south from adjacent to the fortified house, the mortuary chapel (national monument) can be seen within the walled graveyard to the right; close up view of the mortuary chapel**





**Illus. 14. 76 RMP map showing the location of the recorded monuments on Carbury and its relationship with Carbury village and Newbury Demesne to the southeast.**



**Illus. 14. 77 Aerial view of the earthworks sites and upstanding features on Carbury Hill**







**Illus. 14. 79 Aerial view of Lullymore Ecclesiastic site (RMP KD012-006) with the walled graveyard centrally placed within the enclosure**



**Illus. 14. 80 Lullymore ecclesiastical site (KD012-006) looking south and the northern outer ditch and bank boundary of the surrounding enclosure**





**Illus. 14. 81 Lullymore graveyard (RPS B12-01), three cross inscribed slabs in modern graveyard wall and bullaun stone**

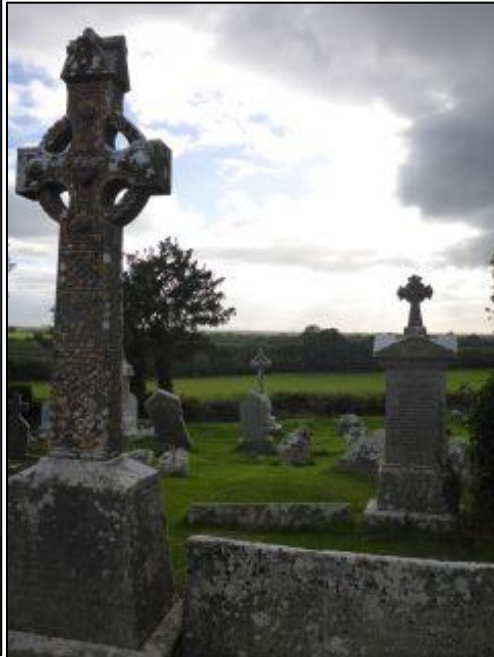


**Illus. 14. 82 View towards Cloncumber cluster (to the south) from Lullymore monastic site car park**



**Illus. 14. 83 Grange Castle – tower house (KD002-007) National Monument, elevation, view taken from the southwest, Grange Castle and surrounding structures and walls view from east looking west and view to the west towards the walled garden**

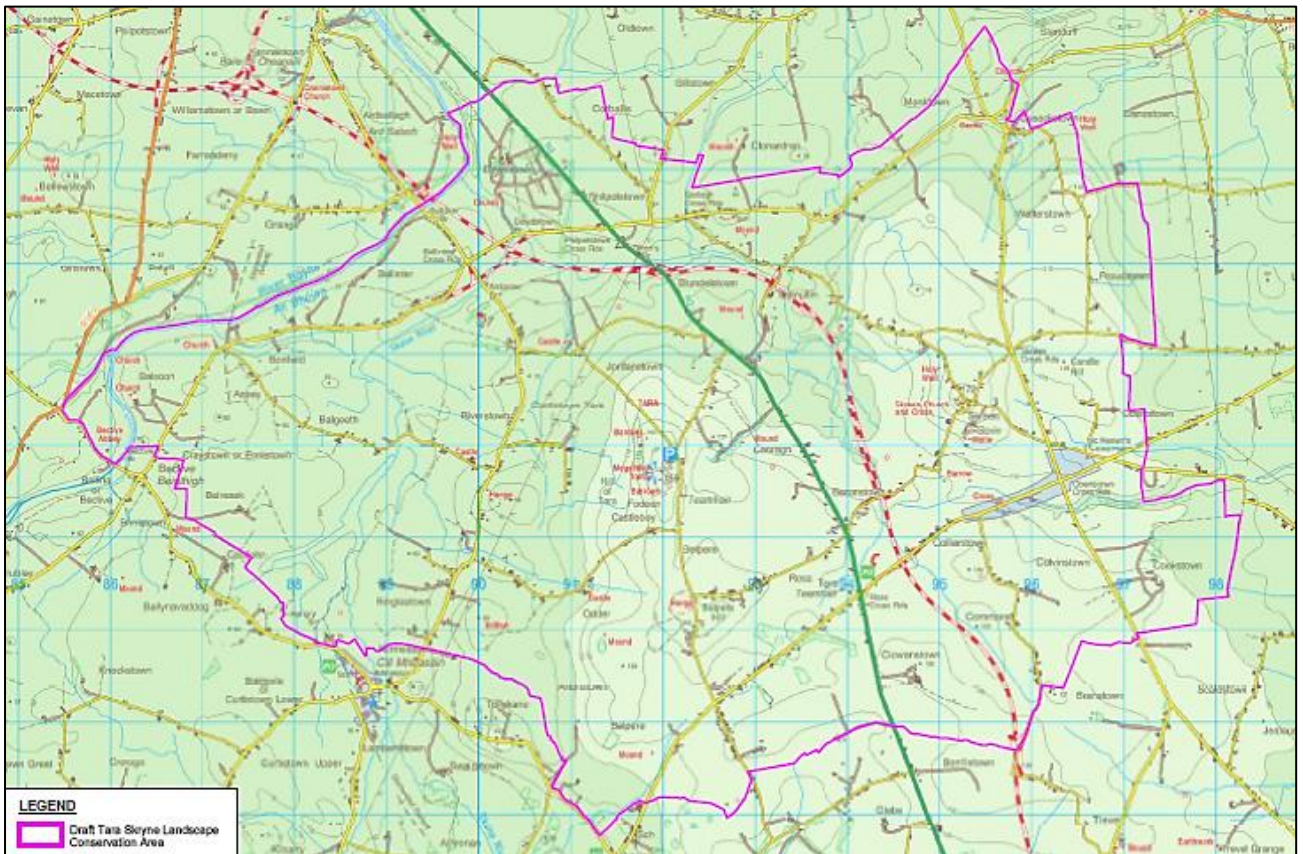




**Illus. 14. 84 Aerial view of the Carrick Complex containing a tower house, church, graveyard and enclosure; Carrick Castle - Hall House (KD002-009); Carrick church and graveyard (KD002-010)**

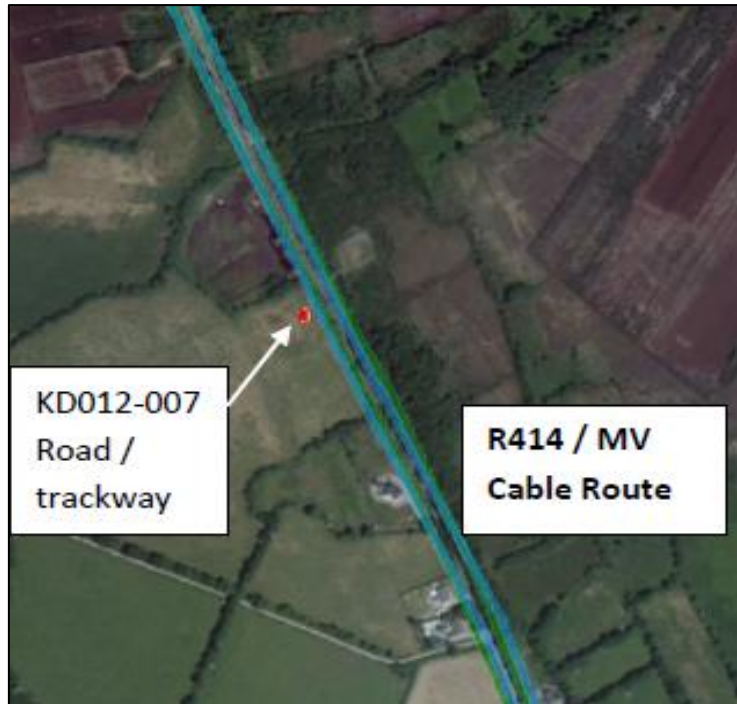


**Illus. 14. 85 Aerial view of Donore Castle, Co Meath, National Monument 232**

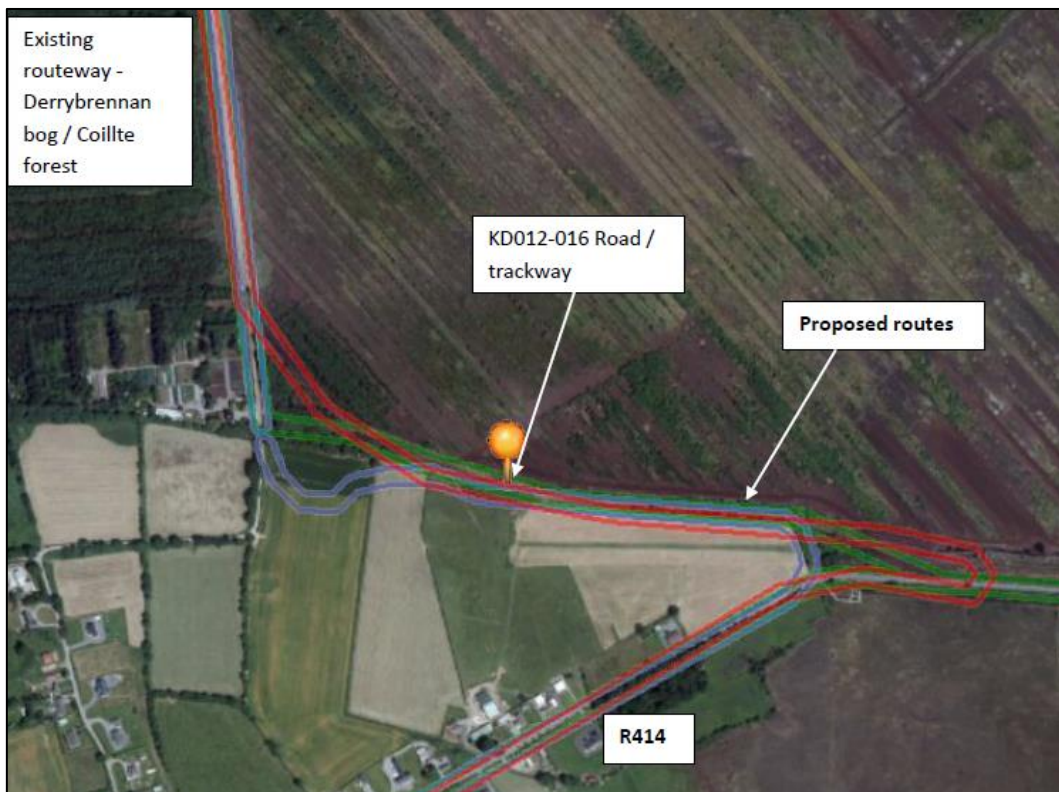


**Illus. 14. 86 Draft Tara Skryne Landscape Conservation Area**





**Illus. 14. 87 AAP 3 Barnaran Townland showing the location of KD012-007 in the vicinity of the R414**



**Illus. 14. 88 AAP Lullymore West Townland showing the location of KD012-016 and the proposed cable and access routes**